

C21 CUSTOM FURNISHINGS



2021 CATALOGUE

ONE COMPANY FOR ALL YOUR CUSTOM COMMERCIAL FURNITURE AND DECOR NEEDS.

Western Canada

Central Canada

Eastern Canada



About C2

C2 Custom Furnishings offers a complete line of custom furniture solutions which address today's needs of durability, affordability and style. C2 is a one stop shop for all your commercial furnishings, appliances, and décor. The C2 team works hard to take care of all the details in order to make every clients job easier.

C2 Custom Furnishings owns the innovative GoodKnight Bed Bug Control Bed - a bed frame that traps and kills bed bugs using heat instead of chemical pesticides. The GoodKnight Bed is used to both treat and prevent bed bugs in commercial and residential spaces.

Award




Recipient of the Winnipeg Chamber of Commerce – Spirit of Winnipeg – 'Rising Star Award' in spring of 2020 for the GoodKnight Bed.



C2 works with:

- Retirement & Long-Term Care Facilities
- Universities & Colleges
- Hotels
- Military Accommodations
- Non-profits
- Healthcare
- Any Commercial Space

Contact information:

-  www.C2CustomFurnishings.com
-  info@c2customfurnishings.com
-  204-797-3201



Mission

Building strong relationships with customers and suppliers to make their jobs easier, while continually providing innovative solutions, quality products, and a high standard of customer service.



Vision

To be widely recognized as one company for all commercial furniture and decor needs, while creating healthier communities through effective, chemical-free bed bug control.



Innovation

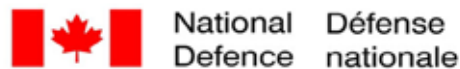
C2 has seen award winning success for the innovative GoodKnight Bed - a bed frame designed and tested by scientists and engineers to trap and kill bed bugs using heat instead of chemical pesticides.



Community

C2's work has encouraged the donation of the GoodKnight Bed and other C2 products as much as possible. C2 continues to work with the non-profit sector to find durable, sustainable, and affordable furniture that will last.

C2 Clients



Seating 1

Dining Chairs	2
Bar Chairs	9
Banquet Chairs/Booths	10
Stackable Chairs	11
Chair Carts	13
Accent Chairs	14
Sofa & Loveseats	21
Theater Seating	25
Benches	26
Stools	28
Drafting Chairs	29

Tables 30

Coffee Tables	31
Side Tables	33
Sofa Tables	33
Dining Tables	34
Boardroom Tables	35
Folding Tables	37
Adjustable Tables	38
Flip Top Tables	40
Medicine Wheel Table	40

Office Furniture & Accessories 41

Office Chairs	42
Desks	47
Desk Returns	49
Credenzas	50
Storage	51
Locking Metal File/Storage Cabinets	52
Office Accessories	53
Reception Counters	54
Cubicles	55

Lecterns 57

Salon Furniture & Accessories 58

Salon Chairs	58
Salon Wet Stations/Dryers	60
Salon Styling/Manicure Tables & Accessories	62

Healthcare Furniture & Accessories 63

Treatment Tables & Mattresses	64
Stools	66
Cabinets	67
Patient Room Accessories	68
Personal Protective Equipment	69
Healthcare Seating	71
Recliners	75
Sleepers	78
Modular Seating	80
Benches	81
Tables	82
Dressers	83
Wardrobes	84
Bedside Tables	85

Outdoor Furniture 86

Collections	87
Outdoor Garden & Dining Seating	92
Outdoor Tables	95
Recycled Plastic Collection	97
BBQs	102

Appliances 105

Refrigerator	106
Beverage Coolers	107
Bar Fridges	110
Freezers	111
Vending Machines & Water Cooler	112
Ovens & Stoves	114
Microwaves & Small Appliances	115
Dishwashers	116
Washers & Dryers	117
Bathroom & Common Area Accessories	119

**Accommodation
Furniture & Accessories 123**

Dressers	130
Wardrobes	131
Bedside Tables	132
GoodKnight Bed	133
Janitorial	136
Personal Protective Equipment	139

Fitness & Activity Rooms 141

Fitness Centres	142
Pool Tables	143
Air Hockey Tables	145
Sports Tables	146
Shuffleboards	147
Pianos	148
Poker Tables	149

Decor 150

Clocks	154
Lamps	155
Live Plants	156
Permanent Flowers	158
Permanent Plants	160

Art 163



Seating

Contents

Dining Chairs	2
Bar Chairs	9
Banquet Chairs/Booths	10
Stackable Chairs	11
Chair Carts	13
Accent Chairs	14
Sofa & Loveseats	21
Theater Seating	25
Benches	26
Stools	28
Drafting Chairs	29

Displayed are examples of products that C2 can provide. More products and variations are available, please inquire.



Dining Chairs

Aluminum Chairs

C212006



W: 22.25" D: 24" H: 37.75"
 Seat: W: 19.25" D: 20" H: 19.5"
 Arm height: 26.5"
 Between arms: 19.25"

Aluminum wood grain dining chair.
 Currently available in "slate" finish.

* **Lightweight construction**

C212007



W: 23.5" D: 25" H: 42"
 Seat: W: 20" D: 19.5" H: 19.5"
 Arm height: 26.5"
 Between arms: 21"

Steel Chairs

C28026



The frame is made of 1 ¼" x 1 ¼"
steel tubing.
The arms are 1 ¾" wide x ½" thick.
The frame is made of 16 gauge steel.

W: 20" D: 23" H: 37"
Seat: W: 20" D: 17"
Arm height: 25.75"

C28027



The frame is 1 ¼" diameter steel tubing.
The arms are 1 ¾" wide x ½" thick.
The frame is made of 16 gauge steel.

W: 24" D: 24.5" H: 34.25"
Seat: W: 21" D: 18"
Arm height: 26.75"

Wood Frame Chairs

C212003



W: 23" D: 24" H: 33"
Seat: W: 19.5" D: 18.5" H: 20"
Arm height: 26.5"

C212004



W: 17.5" D: 21" H: 42.5"
Seat: W: 17.5" D: 15.5" H: 30"

C212005



W: 24" D: 23" H: 40"
Seat: W: 21" D: 18" H: 19"
Arm height: 25"
Between arms: 21"

C28005



Matching side chairs available.
Plain back detail or choice of 2 decorative backs.

W: 24.5" D: 24.5" H: 36.75"
Seat: W: 20" D: 19.5"
Arm height: 25.75"

C28007



A standard elbow comfort groove as pictured above.

W: 24.5" D: 26.5" H: 38.25"
Seat: W: 20.25" D: 18.5"
Arm height: 25.75"

C28008



A standard elbow comfort groove as pictured above.

W: 24.5" D: 26.5" H: 38.25"
Seat: W: 20.25" D: 18.5"
Arm height: 25.75"

C28028



W: 23.25" D: 25" H: 35"
Seat: W: 19.5" D: 19.75"
Arm height: 25.25"

C28001



An exposed wood seat frame is available.

W: 23" D: 23.5" H: 35"
Seat: W: 20.75" D: 20"
Arm height: 25

C28002



A fully wrapped upholstered is available.

W: 23" D: 23.5" H: 35"
Seat: W: 20.75" D: 20"
Arm height: 25"

Above chairs are available with casters on the front legs.

C28010



Front casters available.
Customized button placement on the back (up to 4 buttons).
Customized nail head detailing on the seat and/or back.

W: 24" D: 24.5" H: 38"
Seat: W: 20" D: 19.5"
Arm height: 25.75"

C28009



C28011



Matching side chair available.
Front casters available.

W: 23.5" D: 24" H: 40"
Seat: W: 20" D: 19.5"
Arm height: 25.5"

C28012



Matching side chair available.

W: 24.5" D: 23.25" H: 37"
Seat: W: 19.5" D: 17.75"
Arm height: 26"

C28029



Matching arm chair available.

W: 18" D: 19.5" H: 35.25"
Seat: W: 18" D: 18"

C28006



Front casters available and can be stacked 4 high.

W: 24" D: 24.5" H: 38"
Seat: W: 20" D: 19"
Arm height: 25.75"

C28030



Matching arm chair available.

W: 18" D: 21.75" H: 34.25"
Seat: W: 18" D: 17.25"

C212000



W: 24" D: 20" H: 35"
Seat: W: 20" D: 19" H: 19.5"
Arm height: 26.5"

C212001



W: 24", D: 24.5", H: 41.5"
Seat: W: 20" D: 19" H: 19.5"
Arm height: 26.5"

C28003



Matching side chair available.
Front casters available.
Can add hand hole.
Can add plain back detail or choice of 4 decorative backs.

W: 24" D: 24.5" H: 38"
Seat: W: 20" D: 19.25"
Arm height: 25.75"



C28004

Matching side chair available.
Matching Bariatric chair available.
Options:
Front casters available.
Plain back detail or choice of 2 decorative backs as shown.

W: 24.5" D: 24.5" H: 36.75"
Seat: W: 20" D: 19.5"
Arm height: 25.75"



C28013



C28014



C28015



Front casters available on chairs C28013 to C28015.

W: 25.25" D: 27.5" H: 35.5"
Seat: W: 19.5" D: 19.5"
Arm height: 25"

W: 25.5" D: 27.5" H: 35.5"
Seat: W: 19.5" D: 19.5"
Arm height: 25"

W: 24" D: 27.5" H: 35.5"
Seat: W: 19.5" D: 19.5"

C28016



Front casters available.

W: 22.5" D: 25" H: 37.5"
Seat: W: 18.75" D: 18"
Arm height: 24.25"

C28018



Matching side chair available.
Front casters available.

W: 24.75" D: 25.75" H: 37.5"
Seat: W: 18.75" D: 18"
Arm height: 24.25"

C28017



Front casters available.

W: 25.5" D: 25" H: 37.5"
Seat: W: 18.75" D: 18"
Arm height: 24.25"

C28025



Front casters available.

W: 19" D: 23.5" H: 36.25"
Seat: W: 19" D: 17.5"

C212002



W: 25", D: 25.5", H: 41"
Seat: W: 20.5" D: 19" H: 19"
Arm height: 26"

C28019



W: 23.75" D: 25.5" H: 35.25"
Seat: W: 20" D: 18.75"
Arm height: 25.5"

C28020



W: 25.5" D: 25" H: 37.55"
Seat: W: 18.75" D: 18"
Arm height: 24.25"

C28021



W: 24.5" D: 26.25" H: 41.25"
Seat: W: 18.75" D: 18"
Arm height: 24.25"

Matching side chair available.
Front casters available.

C28022



C28023



C28024



Available with or without button tufting. Available with casters on the front legs.
Optional piping and nail head detailing is available.

W: 25" D: 27.75" H: 40.5"
Seat: W: 18.25" D: 18.58"
Arm height: 26"

Bar Chairs

C28099



C28100



Nail head detailing is available as an option (as shown).

W: 22" D: 23.25" H: 45"
Seat: W: 19" D: 17.5
Arm height: 36"

W: 22" D: 23.25" H: 45"
Seat: W: 22" D: 17.5

C22092



C22093



C22091



Metal legs.
3 faux leathers colours to choose from.

W: 16" D: 17" H: 42.5"



Banquet Chairs / Booths

C26028



Supports more than 1,000 lbs.
Durable, lightweight steel frame.
Scratch-resistant powder coated frame.
Available in approved or COM fabric.
2.5-inch waterfall seat for long-term seating comfort.
Silhouette-style back with no exposed fasteners.
Stacks up to 10 chairs high.

Specifications

W:17.4" H: 37.5"
Seat D:16.75"
Seat H: 18.75"
Weight: 11.3 lbs

Options

Frame: Steel
Ganging: Retractable
Frame Finish: Black
Quick Ship Fabrics: Black, Navy, Burgundy

C26027



C28098



Booths are custom made to specifications provided.



Stackable Chairs

C24012



C24013



C24014



C24011



Plastic seat and back with chrome finish steel frame.

Colours: Grey, Burgundy, Blue, Black
Weight Capacity: 250 lbs

W: 18.125" D: 18.31" H: 30.75"
Seat H: 17.625"

C28168



Nesting Chair.
Flip / Nesting Chairs.
Vertical nesting position.
Steel construction - finish Silver Epoxy paint.
Black MESH Back.
On casters (non locking).
Seat Black Standard upholstery as shown.
Other Fabrics available.

1 size available

C28169



Mesh - Stacking chair.
Polyurethane arms pads.
Steel construction - Chrome plated.
Black MESH back.
Stackable chairs— maximum stacking 5 chairs high.
Seat Black Standard upholstery as shown.
Other Fabrics available.

1 size available

C28031



Black plastic arms.
Can stack 5 high.

W: 24.5" D: 21" H: 31.75"
Seat: W: 17" D: 18.25"
Arm height: 27"

C28032



W: 24.5" D: 21" H: 32"
Seat: W: 17" D: 18.25"
Arm height: 27"

C24016



Plastic seat and back with chrome finished steel frame. Stacking and ganging, stacking dolly available.

GREENGUARD Indoor Air Quality Certified

C24015



Thick padded seat and back with molded foam, heavy duty black frame, stackable.

GREENGUARD Indoor Air Quality Certified

C24017



Plastic seat and back with chrome finished steel frame.

C28034



W: 21.75" D: 22.25" H: 32.25"
Seat: W: 17" D: 18.25"
Arm height: 25.5"

C25009



C25010



Available with or without arms. They are comfortable, efficient and durable enough to withstand intensive use.



C230 C231 C232 C233 C234

Available in colour options C230 to C234.

C28041



Heavy Duty Folding Chair.
Suitable for outdoor and indoor use and built to last.
The 18 gauge, 1 1/8" diameter steel tube frame has 2 cross bars for strength.
The slightly textured seat and back hide dirt and scratches and look great with the textured silver vein powder coated frame.

W: 19" D: 22.75" H: 34.5"
Seat: W: 15" D: 16"

C24024



Metal Seat and Back.
Folding For Easy Storage.
Weight Capacity: 300 lbs.

W: 18.75" D: 18.75" H: 30.25"

C24025



Vinyl Padded Seat and Back.
Folding For Easy Storage.
Weight Capacity: 300 lbs.

W: 18.75" D: 18.75" H: 30.25"

C24029



Metal Seat and Back.
Folding For Easy Storage.
Weight Capacity: 300 lbs.

W: 18.75" D: 18.75" H: 30.25"

Chair Carts

C28040



Single stack chair dolly.

C28039



Double stack chair dolly.

C28038



Hand cart.



Accent Chairs

C21002



Metal frame in polished finish.
Attached cushions.
Leather upholstery over foam cushioned seat.

W: 32" D: 28" H: 32"

C21001



Metal frame in polished nickel-tone finish.
Attached cushions.
Black leather upholstery over foam cushioned seat.

W: 32" D: 28" H: 32"

C21000



Attached back and seat cushions.
Exposed metal frame.
Faux leather upholstery.
Upholstery-wrapped padded armrests.

W: 27.75" D: 32.5" H: 36.75"

C21003



Exposed metal frame in gold tone metallic finish.
Faux leather upholstery.
Upholstery-wrapped padded armrests.
Wraparound floor protector glides.

W: 28.5" D: 30.25" H: 36.25"

C21004



Attached back and seat cushions.
Faux leather polyester upholstery.
Exposed frame in faux wood finish.

W: 28" D: 35.5" H: 35.25"

C21005



Metal frame with blackened gunmetal finish.
Chair is made with tubular steel.
Chair has button tufted box seat and back that is upholstered in dark vintage look faux leather.

W: 24" D: 27" H: 36"

C21007



Leather interior upholstery; vinyl/polyester exterior upholstery.
Exposed feet with faux wood finish.

W: 32" D: 38" H: 36"

C28053



May be ordered with the removable/storable/swiveling tablet, available in 3 sizes.

W: 29.5" D: 28.5" H: 36"
Seat: W: 24.25" D: 19"

C28054



Matching loveseat available.

W: 32.75" D: 32" H: 41.25"
Seat: W: 22" D: 19"
Arm height: 24.5"

C28043



W: 32.75" D: 32" H: 41.25"
Seat: W: 22" D: 19"
Arm height: 24.5"

C28044



C28045



Removable seat cushion.
The kidney cushion is standard.

W: 30" D: 35.5" H: 40.5"
Seat (with kidney cushion): W: 24" D: 17"
Seat (without kidney cushion): W: 24" D: 20"
Arm height: 24"

C28046



Removable seat cushion.

W: 26" D: 29" H: 36"
Seat: W: 20" D: 19"
Arm height: 25"

C28047



Removable seat cushion.
Available in a loveseat and a 3 seat sofa.

W: 32.5" D: 32.25" H: 40"
Seat: W: 22" D: 20"
Arm height: 24"

C28042



Made with a tight seat as shown. It is also available with a loose, reversible seat cushion.
Available with the removable/storable/swiveling tablet.
Available with wood arm caps (as shown).
Available in a chair, loveseat or couch - with tight and loose seat options and upholstered or wooden arms and reversible seat cushions.

W: 28.5" D: 30" H: 35.5"
Seat: W: 21" D: 20"
Arm height: 25.5"



C28048



Removable seat cushion.
Available with 24" Arms height.
Available in a loveseat and a 3 Seat
Sofa.

W: 28.75" D: 31" H: 38"
Seat: W: 22.5" D: 20.5"
Arm height: 20"

C28049



Removable seat cushion.
Can be ordered with the
removable/storable/ swiveling
tablet, available in 3 sizes.
Available in a Love seat and sofa.

W: 29" D: 28" H: 42"
Seat: W: 22" D: 20.5"
Arm height: 24.5"

C28052



W: 26.25" D: 28.75" H: 34.25"
Seat: W: 20" D: 20"
Arm height: 23.5"

C21006



W: 32" D: 36" H: 41"

C21008



W: 35.5" D: 30.5" H: 34.5"

C24032



W: 32" D: 33.5" H: 30.72"

C28058



Removable seat and back cushions. The legs of are made of 2" x 1/2" solid steel bar stock available only with Chrome plating.
Can be ordered with the removable/storable/ swiveling tablet, available in 3 sizes.

W: 30.5" D: 33" H: 34"
Seat: W: 22.5" D: 20.5"
Arm height: 24.5"

C28056



Removable seat and back cushions. Available in loveseat and sofa.

W: 30.5" D: 28.5" H: 35"
Seat: W: 24.5" D: 19"
Arm height: 26.75"

C28057



Removable seat and back cushions. The steel frame is made with 1" x 1" steel tubing.
The standard finish of the steel frame is chrome plating.
Other plated or powder coated finishes are available.

W: 32.5" D: 29.5" H: 35"
Seat: W: 24.5" D: 19"
Arm height: 26.75"

C28055



W: 29.5" D: 28.5" H: 36"
Seat: W: 24.25" D: 20.25"
Arm height: 26.25"

C28059



W: 29" D: 31" H: 29"
Seat: W: 19" D: 20"
Arm height: 22.5"

C28060



W: 24.75" D: 28.75" H: 38.25"
Seat: W: 24.75" D: 19.5"

C28091 - Bariatric Chair



The seat is made with high density foam over a double layer of plywood.
The back is made with no sag springs.

W: 38" D: 31" H: 36"
Seat: W: 32" D: 21"
Arm height: 25"

C28084



W: 30.5" D: 36" H: 41"
Seat: W: 24.5" D: 20"
Arm height: 24"

C28085



W: 34.75" D: 37.75" H: 40.25"
Seat: W: 21" D: 20.5"
Arm height: 25.25"

C28086



W: 34.25" D: 37.75" H: 40.25"
Seat: W: 21" D: 20"
Arm height: 25.25"

C28087



W: 34.75" D: 37.75" H: 40.25"
Seat: W: 21" D: 20.5"
Arm height: 25.25"

All of the chairs shown above are glider rockers that recline.
The glider rocker function has a manual lock that must be engaged in order to be able to recline.
Above chairs are available in the Anti-Microbial finishes listed below:
Cherry, Natural, Coffee, Chestnut, Harvest, Espresso
Can be ordered in different fabrics and leathers.

C28088



Platform rocker. The four legs stay steady on the floor and just the seat and back are able to rock back and forth within a limited range.
Can be ordered with upholstered insert on the arm and with upholstered side panels or it may be ordered with wood arms and open sides.

W: 26.5" D: 32" H: 39.75"
Seat: W: 21.5" D: 16.75"
Arm height: 26.25"

C28089



Glider rocker that goes back and forth on a track. The chair can be locked in any position along the path. As the chair goes back, it gently reclines.
Matching ottoman is available and moves back and forth to mimic the motion of the chair.

W: 30" D: 34" H: 40.5"
Seat: W: 21" D: 19"
Arm height: 25.25"

C28090



W: 33" D: 28" H: 35.75"
Seat: W: 21 1/2" D: 19"
Arm height: 26"

C22089



C22090



C22088



Metal legs.
3 faux leathers colours to choose from.

W: 22" D: 21" H: 31"

C22101



C22098



C22100



C22099



Polypropylene body, wood and metal legs, and polyester cushion. Machine washable cushion cover.
Maximum weight capacity 242 lbs / 110 kg.
Assembly required.

W: 19.5" D: 22.5" H: 30.25"
Seat height: 18"



Sofas & Loveseats

C28076



Removable seat cushions.
Matching chair and loveseat available.

W: 80.5" D: 35" H: 37.5"
Seat: W: 66" D: 20"
Arm height: 26"

C28074



Removable seat and back cushions.

W: 85" D: 35" H: 38"
Seat: W: 68.75" D: 20"
Arm height: 26.5"

C21010



W: 90" D: 38" H: 36"

C28066



Removable seat cushions.
Matching chair and loveseat available.

W: 74" D: 31" H: 38"
Seat: W: 67" D: 20.5"
Arm height: 24"

C28071



W: 78" D: 36" H: 32"
Seat: W: 68" D: 20.5"
Arm height: 26"

C28072



Also available in chair.

W: 54" D: 36" H: 32"
Seat: W: 45" D: 20.5"
Arm height: 26"

C25014



C25013



This series offers a clean profile that conceals a structural steel framework and ensures a high level of durability.

C24031



W: 72.5" D: 30.5" H: 29.5"

C24030



W: 51.5" D: 30.5" H: 29.5"

Easy Care Vinyl.
Silver Finish Legs.

C21009



Attached back and loose seat cushions.
Leather interior upholstery; polyester/vinyl exterior upholstery.
Exposed feet with faux wood finish.

W: 85" D: 38" H: 37"

C28064



Available as a 3 seat sofa.

W: 50.75" D: 28.25" H: 35"

Seat: W: 43" D: 18.5"

Arm height: 23.75"

C28065



Removable seat cushions.
Available with a matching Chair
and 3 Seat Sofa.

W: 53" D: 31" H: 38"

Seat: W: 46" D: 20.5"

Arm height: 24"

C28069



Available in sofa and chair.
Removable cushions.
Various finishes available for legs.

W: 53" D: 28.5" H: 35"

Seat: W: 47" D: 19"

Arm height: 26.75"

C28067



Removable seat cushions.
Can be ordered with the removable/
storable/ swiveling tablet, available in
3 sizes.
Available in a matching chair and sofa.

W: 50" D: 28" H: 42"

Seat: W: 43" D: 20.5"

Arm height: 24.5"

C28068



Available in sofa.
Removable cushions.

W: 54" D: 33" H: 32"

Seat: W: 44.5" D: 20.75"

Arm height: 24"

C28070



Available in sofa and lounge chair.

W: 55" D: 29.5" H: 35"
Seat: W: 47" D: 19"
Arm height: 26.75"

C28073



Also available in sofa.

W: 62" D: 33.5" H: 35"
Seat: W: 46" D: 22"
Arm height: 26"

C28075



Also available in sofa.

W: 58" D: 35" H: 37.5"
Seat: W: 44" D: 20"
Arm height: 26"

C28077



W: 55" D: 29" H: 34.5"
Seat: W: 44" D: 19"
Arm height: 24.5"

C21011



W: 79" D: 38" H: 35"
Weight: 107 lbs

C28061



Part of a chair, love seat, sofa series all available with tight or loose seats and upholstered arms either with or without wood arm caps.

W: 53.5" D: 30" H: 35.5"
Seat: W: 46" D: 20"
Arm height: 25.5"

C28062



C28063



Removable seat cushions. The two kidney cushions are standard. Available as a 3 seat sofa.

W: 60" D: 35.5" H: 40.5"
Seat: W: 54" D: 20"
Arm height: 24"

Theater Seating

C24026



Available in: Leather and fabric
LED cupholder switch for power operation.
LED cupholder with groundlighting.

C24027



Available in: Leather and fabric
LED cupholder switch for power operation.

C24028



The foam top arm features a handy storage compartment. Available in either power or manual recline. Accented with topstitching details and can be easily personalized by selecting a chrome leg or a solid espresso wood foot. Built-in cupholders.

C24029

Top stitched flange welt detail and a pillow top seat finished with a clean center seam. A luxurious 1.5" of memory foam offers uncompromising comfort for long durations and extended footrest. Power lumbar, headrest, and recline. A memory set key allows you to program your ideal position and return to it automatically with the push of a button. All functions, including LED lighting in the cupholder with seven different colour choices and three intensities, are conveniently controlled from the cupholder. The cupholder also features integrated smart USB charging that only draws power when in use, preserving the chair's battery life.



Benches



C28094



W: 50" D: 20" H: 28"
 Arm height: 28"
 OR
 W: 72" D: 20" H: 28"

C28095



W: 55" D: 20" H: 28"
 Arm height: 28"
 OR
 W: 72" D: 20" H: 28"

C28096



W: 55" D: 20" H: 22 1/2"
 Arm height: 28"
 OR
 W: 72" D: 20" H: 22 1/2"

C28097



W: 55" D: 20" H: 23"
 Arm height: 23"
 OR
 W: 72" D: 20" H: 23"

Standard foam over board seat construction on above benches.

C22094



Finished in a walnut veneer, this MDF bench includes powder coated metal legs and an attractive faux leather padded seat. Max weight capacity 330 lbs.

W: 39.5" D: 16" H: 16.5"

C22095



W: 17" D: 17" H: 18"

C22096



W: 32" D: 17" H: 18"

C22097



W: 48" D: 17" H: 18"

Stools

C25017



This stool offers back support and a seat height range suitable for working at counter-height. It features molded polyurethane seat and back for extreme durability.

C28121



Rubber tread for safety.
All welded steel base and top (no screws or rivets).
Durable chrome finish.
350 lb weight capacity.

W: 14.25" D: 11.25" H: 9"

C28122



15" seat diameter x 18-23" adjustable height.
2" dual wheel hooded casters.
21" black nylon 5-leg base.

Available in colour options C21 to C212.

C28123



C21 = Desert Tan	C27 = Black
C22 = Gunmetal	C28 = Burgundy
C23 = Country Mist	C29 = Cappuccino
C24 = Wedgewood	C210 = Palm Coast
C25 = Royal Blue	C211 = Purplegrey
C26 = Warm Grey	C212 = Slate Blue



Drafting Chairs

C24021



Other colours available.
Pneumatic Height Adjustment.
Black Vinyl Stool and Back.
Height Adjustment 19.5" to 24.5".
Heavy Duty Chrome Base with Dual Carpet Casters.
Weight Capacity: 200 lbs.

W: 22" D: 21.5" H: 37.25"

C24023



Adjustable foot ring.
Height Adjustment 25" to 35" overall

W: 26" D: 22.5" H: 25.75"

C24022



W: 25.75" D: 25.75" H: 18.813"

Other colours available.
Pneumatic Height Adjustment.
Backless Stool with Saddle Seat.
Seat Angle Adjustment.
Height Adjustment 19" to 24".
Heavy Duty Dual Carpet Casters.
Weight Capacity: 250 lbs.

C24026

Contour Self-Skinned Urethane Seat and Back with Built-in One Touch Pneumatic Seat Height Adjustment.
Back Height Adjustment.
Heavy Duty Nylon Base with Dual Wheel Carpet Casters.
GREENGUARD Indoor Air Quality Certified.
Weight Capacity: 250 lbs

W: 18.5" D: 22.5" H: 37.5"



C24032



Available with or without arms
Plastic colour: Black
Available in 4 styles:
Plastic Back & Seat
Plastic Back & Upholstered Seat
Upholstered Seat & Back
Upholstered Seat/Mesh Back

W: 17.5" D: 24" H: 18" to 23 1/4"



Tables

Contents

Coffee Tables	31
Side Tables	33
Sofa Tables	33
Dining Tables	34
Boardroom Tables	35
Folding Tables	37
Adjustable Tables	38
Flip Top Tables	40
Medicine Wheel Table	40

Displayed are examples of products that C2 can provide. More products and variations are available, please inquire.

Coffee Tables

C28101



Can order with or without the bottom shelf. Solid wood tables in either white oak or birch.

C28102



Solid wood tables in either white oak or birch.

C28103



Solid wood tables in either white oak or birch.

Options: Rectangular Coffee Table: 22 x 48 x 16"H | Round Coffee Table: 36" round x 16"H | Cocktail Table: 36 x 36 x 16"H
 Rectangular End Table: 22 x 28 x 21"H | Round End Table: 24" round x 21"H | Sofa Table: 18 x 48 x 29"H

C28107



C28104



C28108



Sizes available: Oval: 22 x 44 x 16"H | 18" dia x 21"H | 36" dia x 16"H
 Finishes available: Walnut wood (clear lacquer) | Cherry wood (clear lacquer) | Birch wood (anti-microbial finishes available)
 Any specified plastic laminate

C24015



W: 36" D: 36" H: 20"

C21015



W: 34" D: 34" H: 19"

C24016



W: 48" D: 19" H: 24"

C213006



W: 48" D: 20" H: 28"

C213007



Tops of polished white marble and natural cane shape soft triangles, as black iron hairpin legs adding mid-century allure.

Cane Table: W: 28" D: 18" H: 16.5"
Marble Table: W: 43" D: 27.5" H: 15"
Overall: W: 43.25" D: 27.5" H: 15"

C213008



A rounded tabletop of smoked drift oak offsets a triad of slim, tapered legs. Waxed black joinery adds a fresh look of high contrast.

W: 43" D: 43" H: 14.75"

C213012



The Geometry table is crafted from solid slabs of acacia wood over a matte black iron base. 6 sizes available

W: 48" D: 30" H: 17"

C213013



Oversized yet low in profile, the River Stone tables are available in many finishes. The finish is super-durable and has the color going all the way through the piece, ensuring any scratches or chips over the years will not be noticeable.

W: 42" D: 26" H: 14"

C24014



W: 54" D: 30" H: 18"

C213009



Reclaimed Pine
Sundried finish.

W: 35.43" D: 35.43"
H: 15.75"

C213010



Bronze Antique Powder Coated
Base with white Marble Stone.

W: 31.5" D: 31.5"
H: 15.7"

C213011



Antique Brass.

W: 26.75" D: 26.75"
H: 15.5"

C25066



Please inquire about the
different finishes available.

W: 48" H: 24"

Side Tables

C24017



W: 23" D: 23" H: 24"

C24018



W: 23" D: 23" H: 26"

C24019



Antique Brass.
W: 18" D: 18" H: 18.5"

C24020



Round Marble Table.
W: 15.7" D: 15.7" H: 19.7"

C24021



Square Marble Table.
W: 19.7" D: 19.7" H: 19.7"

C24022



W: 26" D: 22" H: 22"

C25068



Please inquire about the
finishes that are available.
W: 21" H: 21"

C24023



W: 18" D: 24" H: 22"

C24024



W: 19" D: 22" H: 22"

C24025



W: 18.75" D: 18.75"
H: 30.25"

C25065



Please inquire about the
finishes that are available.
W: 21" H: 24"

Sofa Tables

C25067

Please inquire about the different finishes that are available.

W: 48" H: 16"



Dining Tables

C213000



Crafted from solid American black walnut hardwood with natural finish or cherry hardwood with several finish options. The finish is GREENGUARD certified.

2 sizes available:
W: 50" L: 72"/96" H: 30"
W: 42" L: 72"/96" H: 30"

C213005



10 sizes available.

W: 36" D: 30" H: 48"

C213002



W: 59" D: 59" H: 30"

C213003



Solid Top Metal Pedestal Table
8 sizes available:
42x60", 42x72", 42x84",
42x96", 48x60", 48x72",
48x84", 48x96"

C213004



A polished walnut veneer, and brushed stainless steel detailing complete this tables seamless look.

W: 47" D: 47" H: 29"

C213001



Finished in a warm honey hue, a trestle-style base of reclaimed pine supports a rectangular top of pine, waxed and bleached for a rustic look with natural depth.

W: 110" D: 39.25" H: 30"

C215008



W: 24" D: 24" H: 29"

C215009



DIA: 30" H: 29"

Chrome or Platinum disc base. Additional top and base sizes available.

Boardroom Tables

C28109



H: 44" W:84" (one piece).

C28110



Diameter: 60"

Table tops can be made from plastic, laminate, or veneer. Customizable top size and shape. Solid edge profile in various styles. Cylinder or customizable base.

C216004



Conference tables combine versatile aesthetics and seamless technology so teammates can connect, collaborate, and move ideas forward.

C28163



Round Meeting Table. Round top with "X" metal base. Silver finish. 2" Diameter shape metal leg.

3 sizes available: DIA: 36" H: 29" | DIA: 40" H: 29" | DIA: 48" H: 29"

C28163 is available in colour options C217 to C220.



C217



C218



C219



C220

C217 = Maple
C218 = Brandy

C219 = Chestnut
C220 = Chocolate

C216000



The tabletop, available in a variety of options, is removable; the base can be polished aluminum or powder-coated black or white.

C216001



This table is available with a round or rectangular tabletop and a steel rod base in chrome, white, or black epoxy resin with a polymer-coated white or black MDF top.

C216002



Many size and material options make this table suitable for use as a dining table or a conference table, or any gathering place in need of an elegant surface.

C216003



This table's simple design easily scales across a wide range of sizes, from small three- to four-person circular tables to large meeting tables.

C216005



With your choice of top shapes and sizes, base styles, and laminate and veneer options, these versatile and durable tables bring style and function to the home and workplace.

C216006



A clear glass surface showcases this understructure, ensuring that both beauty and purpose are equally central to any gathering - whether dining, meeting, or working.

Folding Tables

C26074



W: 60" D: 60" H: 29.25

C24028



W: 48" D: 48" H: 29.25"

C24027



W: 48" D: 24" H: 35.5"

C26075



W: 96" H: 29.25 D: 30"

Durable and lightweight construction. Powder Coated Tubular Frame.
Easy storage, ideal for Indoor or Outdoor Use.
Meets or Exceeds Test Standards (BIFMA and MTL)
Weight Capacity: 350 lbs

C28118



Locks solidly in place in both positions.
Features a rubber coated stacking strip that permits table to be stacked without damaging other tables.
Table trucks are available for moving the tables.

C28115



Table trucks are available for round and rectangle tables.

C28116



C28117



C28113



C28114



All banquet tables have full 2-1/2" aprons made of the same material as the top (plywood or plastic laminate) and powder coated folding legs in black.
1-1/4" plastic laminate top with 1-1/4" semi-soft impact resistant plastic edge.
Edge colours: Black, Burgundy and Forest Green.

Rectangular Sizes available:		Round sizes:
24" x 48"	30" x 48"	48" dia
24" x 60"	30" x 60"	60" dia
24" x 72"	30" x 72"	72" dia
24" x 84"	30" x 84"	
24" x 96"	30" x 96"	

Adjustable Tables

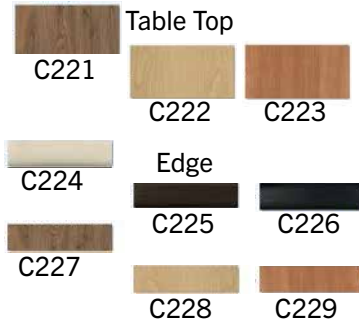
C28105



Zero gravity safety struts with a locking handle for easy and safe adjustability.
 $\frac{3}{4}$ " Table top with high pressure laminate.
 Choice of "H" base (as shown) or "U" base (for more leg space when sitting)
 4 – 2" swivel caster with 2 locks.
 Table top options (see below left):
 High pressure laminate in choice of walnut, maple or cherry finish.
 Edge options: 2 mm wood grain edge to match the above finishes or rounded plastic t-molding edge in solid colors: beige, brown or black.
 Paint color options: Black, Brown or Silver.

W: 15" D: 30" H: 29" to 44"
 Weight Capacity: 60 lbs

Available in colour options C221 to C229.



C221 & C227 = Walnut
 C221 & C228 = Maple
 C223 & C229 = Cherry
 C224 = Beige
 C225 = Brown
 C226 = Black

C28107

This table's base is available with different styles of table top.
 Powder coated 12 gauge steel base.
 Standard finishes are Black, Silver, or Brown.
 The base has a built in transport wheel for ease of movement.
 The base comes with hydraulic self adjusting glides that automatically adjust to uneven floors.
 The base features a zero gravity adjustable height mechanism.
 There is a stationary version (ie. non adjustable height) of this base available.
 Available with an optional flip top mechanism.



Flip-Top

C28254



This table allows patients/residents to sit with other people and have their table top at the proper height and depth specifically for them without affecting any of the other person. Each one of the individual table tops is adjustable 2 ways: up and down, and in and out with locking handles for safety and ease of use.

The base is made from 12 gauge steel with powder coated electrostatic paint. Standard finishes are Black, Silver, or Brown.

The base has 2 built in transport wheels for ease of movement.

The base comes with Table Shox: hydraulic self adjusting glides that automatically adjust to uneven floors.

There is an optional, 12" diameter, height adjustable Lazy Susan available in laminate and edge finish to match the table tops.

* Also available with 4 seats.

C215003



Adjustable height work surface controlled by a hand-crank mechanism.

L: 36" D: 24" H: 27 5/8" to 40 5/8"

C215010

One-touch pneumatic table height adjustment.
Steel frame construction for stability, with locking black casters.

3 sizes available:

W: 24" D: 48" H: 30 1/4 to 43 1/4"

W: 24" D: 60" H: 30 1/4 to 43 1/4"

W: 24" D: 72" H: 30 1/4 to 43 1/4"



C24047



Electric height adjustable worksurface.
Table height adjusts from 24" to 49.5"

15 sizes available

Flip Top Table

C217000



W: 72" D: 19.5" H: 30"

Medicine Wheel Table

C24033



The four person Medicine Wheel Table is a great way to bring the valuable teachings into a space as well start important conversations.

Medicine Wheel Kit Includes:

48" Round Medicine Wheel Table

4 Analogy Chairs - 1 in each of the Medicine Wheel Colors

The 7 Lessons of the Medicine Wheel

3 seat heights available: 14", 16", 18"

Sofa Table

C25067

Please inquire about the different finishes that are available.

W: 48" H: 16"





Office Furniture & Accessories

Contents

Office Chairs	42
Desks	47
Desk Returns	49
Credenzas	50
Storage	51
Locking Metal File/Storage Cabinets	52
Office Accessories	53
Reception Counters	54
Cubicles	55

Displayed are some examples of products that C2 can provide. More products and variations are available, please inquire.

Office Chairs

C24010



Built-in lumbar support.

W: 28" D: 26" H: 43"

C21012



Leather look, swivel.

W: 30" D: 23" H: 43"

C24006



Black mesh executive chair, soft PU padded adjustable arm, pneumatic seat height adjustment, tilt tension with tilt lock.

Weight Capacity: 250 lbs

W: 27.75" D: 28" H: 45.5"

C24007



Fabric padded seat and back, height adjustable PU padded arms, built-in lumbar support, 2-to-1 synchro tilt control with adjustable tilt tension, heavy duty angled nylon base with oversized dual wheel carpet.

Weight capacity: 250 lbs

W: 28" D: 26" H: 43"

C24000



Ergonomic and breathable back and seat, adjustable lumbar support, padded black mesh seat, pressurized seat height adjustment, self-adjusting tilt tension, backrest lock, anti-kickback mechanism, padded flip arms, scuff proof black end caps and oversized dual wheel carpet casters.

W: 26" L: 31" H: 13"

C24001



Breathable mesh back with adjustable lumbar support, thick padded contour bonded leather seat, one touch pneumatic seat height adjustment, tilt control with adjustable tilt tension, height-adjustable arms with soft PU pads, oversized dual wheel carpet casters.

Weight capacity: 250 lbs

W: 27" D: 26" H: 42"

C24002



Leather contour seat and back with built-in lumbar support, pneumatic seat height adjustment, tilt control with adjustable tilt tension and tilt lock, height adjustable angles arms with soft PU pads, oversized dual wheel carpet casters.

Weight capacity: 250 lbs

W: 27" D: 27" H: 46"

C24003



Black eco leather contour seat and back with built-in lumbar support, pneumatic seat height adjustment, tilt control with adjustable tilt tension, height-adjustable arms with PU pads, oversized dual wheel carpet casters.

Weight capacity: 250 lbs

W: 27.75" D: 29" H: 56"

C24004



Black bonded leather seat and back, one touch pneumatic seat height adjustment, tilt control with adjustable tilt tension, polished padded aluminum arms, adjustable leather headrest, oversized dual wheel carpet casters.

Weight capacity: 250 lbs

W: 26" D: 27.75" H: 46"

C24005



Metal frame with blackened gunmetal finish, boxed style seat, tufted faux leather upholstery over thick foam cushion.

W: 24" D: 27" H: 36"

C24008



Fabric padded seat and back, height adjustable PU padded arms, built-in lumbar support, tilt control with adjustable tilt tension, heavy duty angled nylon base with oversized dual wheel carpet.

Weight capacity: 250 lbs

W: 28" D: 26" H: 43"

C24009



Breathable air grid back with built-in lumbar support, thick padded black mesh seat, pneumatic seat height adjustment, tilt control with adjustable tilt tension, height adjustable PU padded arms, heavy duty angled nylon base with oversized dual wheel carpet caster.

W: 29.5" D: 27.25" H: 38.75"

C28166



Task high back chair with black finish base and standard upholstery. Backrest angle adjustment with lockable backward chair tilt adjustment and adjustable tilt tension with 360° swivel. Push button for arm height adjustment of 3". Long seat adjustable height of 19" to 23".

Other fabrics and colours available

C28167



Black mesh backrest and seat with integrated adjustable lumbar support, 360° swivel, and chrome finish base. The height, depth, and horizontal angle of the arms are adjustable, the vertical support is fixed, however the arm rest moves front/back. Backrest angle adjustment with adjustable tilt tension and front to back adjustment of the seat with an adjustable height of 16" to 20".

C21013



Faux leather upholstery, metal and plastic base, casters for easy mobility, adjustable seat height.

W: 18" D:20" H: 34"

C21014



Smooth 360-degree swivel, metal and plastic base, casters for easy movement, faux leather upholstery, adjustable seat height.

W: 18" D: 19.5" H: 34.25"

C24018



Breathable mesh back with built-in lumbar support.
Thick padded seat with custom color options available.
Tough white metal frame.
Contoured molded armrests.
Easy-glide foot-caps reduce floor scratches.
Casters available.

Weight Capacity: 250 lbs

W: 25" D: 25" H: 37"

C24020

Breathable mesh back and fabric mesh seat.
Seat available with custom fabric colour options.
Black finish frame with dual wheel carpet casters.
Set of 2 clips for ganging included.
Seat folds up for horizontal nesting.

Weight Capacity: 250 lbs

W: 24.75" D: 22" H: 36"



C28168



Nesting Chair.
Flip / Nesting Chairs.
Vertical nesting position.
Steel construction - finish Silver Epoxy paint.
Black MESH Back.
On casters (non locking).
Seat Black Standard upholstery as shown.
Other Fabrics available.

1 size

C28169

Mesh - Stacking chair.
Polyurethane arms pads.
Steel construction - Chrome plated.
Black MESH back.
Stackable chairs— maximum stacking 5 chairs high.
Seat Black Standard upholstery as shown.
Other Fabrics available.

1 size available



Desks

C25048



Writing desk with centre drawer. Please inquire about the different finishes that are available.

3 sizes available W: 36" or W: 42" or W: 48"

C28134



3/4 Modesty Panel is recessed 4" Locking Drawer & File pedestal on each side.
1 Black Grommet included - installed inside modesty panel.

C28135



Full Modesty Panel is recessed 4" 2 Drawers & File pedestal on each side, lock on two bottom drawers.
1 Black Grommet included installed inside modesty panel.

C28136



Desk - Right single pedestal. 3/4 Modesty Panel is recessed 4" Locking Drawer & File pedestal on right.
1 Black Grommet included installed inside modesty panel.

C28137



Desk - Left single pedestal. 3/4 Modesty Panel is recessed 4" Locking Drawer & File pedestal on left.
1 Black Grommet included installed inside modesty panel.

C28138



Desk - Right single pedestal to floor. Full Modesty Panel is recessed 4" 2 Drawers & File pedestal on right, Lock on two bottom drawers.
1 Black Grommet included installed inside modesty panel.

C28139



Desk - Left single pedestal to floor. Full Modesty Panel is recessed 4" 2 Drawers & File pedestal on left, Lock on two bottom drawers.
1 Black Grommet included installed inside modesty panel.

3 sizes available for all desks on pg. 47:
W: 60" D: 30" H: 29"
W: 66" D: 30" H: 29"
W: 72" D: 30" H: 29"

Desks C28134 to C28139 available in colour options C217 to C220:



C217



C218



C219



C220

C217 = Maple
C218 = Brandy
C219 = Chestnut
C220 = Chocolate

C28140



Left Corner Desk with extended radius.
1 Full and 1 front gable left
3/4 Modesty Panel is recessed 4", locking drawer
& File pedestal on right.
1 Black Grommet included installed inside
modesty panel.

C28141



Right Corner Desk with extended radius which
includes 1 Full and 1 front gable right 3/4
Modesty Panel is recessed 4", locking drawer &
File pedestal on left.
1 Black Grommet included installed inside
modesty panel.

C28142



Left Corner Desk with extended radius.
1 Full and 1 front Gable left.
Full Modesty Panel is recessed 4", 2 locking drawers
& File pedestal on right, 1 Black Grommet included
installed inside modesty pane.

C28143



Right Corner Desk with extended radius.
1 Full and 1 front Gable right.
Full Modesty Panel is recessed 4",
2 locking drawers & File pedestal on left
1 Black Grommet included installed inside
modesty panel.

All corner Desks have a 20" or 24" wide flat
section where a return can be attached.
Dimensions for all corner desks on pg. 54:

- D: 40" W: 60" D: 27" H: 29"
- D: 40" W: 66" D: 27" H: 29"
- D: 40" W: 72" W: 27" H: 29"

All corner desks available in colour options C217 to C220:



C217 C218 C219 C220

- C217 = Maple
- C218 = Brandy
- C219 = Chestnut
- C220 = Chocolate

Desk Returns

C28144



Left return - Single file.
3/4 Modesty Panel - Not Recessed.
Locking Drawer.
File pedestal on left.

C28145



Right return - Single file.
3/4 Modesty Panel - Not Recessed.
Locking Drawer.
File pedestal on right.

C28146



Left return - Double file.
No Modesty Panel.
2 File pedestal on left, Lock on two drawers.
Also available with 2 Drawers & File pedestal, which includes lock on two bottom drawers.

C28147



Right return - Double file.
No Modesty Panel.
2 File pedestal on right, Lock on two drawers.
Also available with 2 Drawers & File pedestal, which includes lock on two bottom drawers.

Sizes available for desk returns:

- W: 32" D: 20" H: 29"
- W: 36" D: 20" H: 29"
- W: 42" D: 20" H: 29"
- W: 48" D: 20" H: 29"
- W: 32" D: 24" H: 29"
- W: 36" D: 24" H: 29"
- W: 42" D: 24" H: 29"
- W: 48" D: 24" H: 29"

All desk returns available in colour options C217 to C220:



- C217 = Maple
- C218 = Brandy
- C219 = Chestnut
- C220 = Chocolate

Credenza

C28152



2 Lateral file drawers on left with lock.
1 Storage cabinet on right with one adjustable shelf & lock.

C28153



2 Locking storage cabinets with 1 adjustable shelf each.

C28154



4 Lateral file drawers with locks.

C28151



1 Storage cabinet on left with one adjustable shelf & lock.
2 Lateral file drawers on right with lock.

4 sizes available:
W: 60" D: 20" H: 29"
W: 72" D: 20" H: 29"
W: 60" D: 24" H: 29"
W: 72" D: 24" H: 29"

C28149



2 Lateral file drawers on left with centered lock.
Open space on right.

C28150



3 Lateral file drawers on left with centered lock.
Open space on left.

6 sizes available:
W: 60" D: 20" H: 29"
W: 66" D: 20" H: 29"
W: 72" D: 20" H: 29"
W: 60" D: 24" H: 29"
W: 66" D: 24" H: 29"
W: 72" D: 24" H: 29"

All credenzas available in colour options C217 to C220:



C217 = Maple
C218 = Brandy
C219 = Chestnut
C220 = Chocolate

Storage

C28155



Two drawer lateral file cabinet with lock.

C28156



Closed cabinet with 2 locking doors and 4 adjustable shelves.

C28157



Closed cabinet with 2 locking doors and 4 adjustable shelves.

C28158



2 door upper cabinet with 2 adjustable locking shelves and 2 locking lateral file drawers.

4 sizes available:

W: 30" D: 20" H: 29"

W: 36" D: 20" H: 29"

W: 30" D: 24" H: 29"

W: 36" D: 24" H: 29"

4 sizes available:

W: 30" D: 20" H: 72"

W: 36" D: 20" H: 72"

W: 30" D: 24" H: 72"

W: 36" D: 24" H: 72"

C28159



Open Bookcase with 4 adjustable shelves.

2 sizes available

C28160



Freestanding open hutch with 2 large openings and 1 centered divider.

C28161



Freestanding closed hutch with 4 doors and 2 open sections behind doors.

All storage available in colour options C217 to C220:



C217



C218



C219



C220

C217 = Maple

C218 = Brandy

C219 = Chestnut

C220 = Chocolate

3 sizes available for C28160 & C28161:

W: 60" D: 15" H: 42"

W: 66" D: 15" H: 42"

W: 72" D: 15" H: 42"

Locking Metal File/Storage Cabinets

C215000



2 locking drawers with high sides for hanging file folders.
Heavy-duty steel construction.
Meets or exceeds applicable ANSI/
BIFMA standards.

Options:
Legal or Letter

C215001



4 locking drawers with hanging file rails for side-to-side filing.
Reinforced base with counterweight to prevent tipping.
Meets or exceeds applicable ANSI/
BIFMA standards.

Options:
36" Wide or 42" Wide

C215002



4 locking drawers with high sides to accommodate hanging file folders.
Heavy-duty steel construction.
Meets or exceeds applicable ANSI/
BIFMA standards.

Options:
Legal or Letter

C215007



Heavy-duty steel construction.
Adjustable shelves.
Three-point locking system.
Available in Black, Light Grey and Putty.

W: 36" D: 18"

C215004



2 locking drawers with hanging file rails for side-to-side filing.
Reinforced base with counterweight to prevent tipping.
Meets or exceeds applicable ANSI/
BIFMA standards.

Options:
30" Wide, 36" Wide or 42" Wide

C215005



C215006



Fireproof files accommodate legal size filing.
Equipped with UL-listed high-security keylocks.
Constructed with high sides in the drawers for hanging folders.
Files carry the UL 1 Hour Fire and Impact rating.
Available in: 2 Drawer Legal (D: 31")
or 4 Drawer Legal (D: 21")

Office Accessories

C26062



Fits under most desk units.
Made with 35% recycled content.

C26063



Small Guest Room Recycling Container.

C28165



Option Grommet.
Black finish.

C28164



Pull-out computer tray with 5/8" laminated panel on rails.

W: 27" D: 13"

C28148

C28164 & C28148 are available in colour options C217 to C220:



C217 C218 C219 C220

Bridge desk top with cross side wood grain.
W: 32" D: 20" H: 29"
W: 36" D: 20" H: 29"
W: 42" D: 20" H: 29"
W: 48" D: 20" H: 29"
W: 32" D: 24" H: 29"
W: 36" D: 24" H: 29"
W: 42" D: 24" H: 29"
W: 48" D: 24" H: 29"

C217 = Maple
C218 = Brandy
C219 = Chestnut
C220 = Chocolate

Reception Counters

C28162



Front Reception Unit
Transaction Shelf & sides 1" thick
Valence: 2" high included

3 sizes available:
For a standard desk: D: 30" x W: 60"
D: 12" x W: 62" x H: 42"
For a standard desk: D: 30" x W: 66"
D: 12" W: 68" x H: 42"
For a standard desk: D: 30" x W: 72"
D: 12" x W: 74" x H: 42"

C28162 is available in colour options C217 to C220:



C217 = Maple
C218 = Brandy
C219 = Chestnut
C220 = Chocolate

C28251



Locking drawer with cash till and divider.

W: 48" D: 24" H: 42"

C28252



Large cabinet with adjustable shelf.

W: 30" D: 24" H: 43"

C28251 & C28252 are available in colour options C240 to C247:



C240 - Graphite Nebula
C241 - Limber Maple
C242 - Cafelle
C243 - Wild Cherry
C244 - Fusion Maple
C245 - Shaker Cherry
C246 - Black
C247 - Brighton Walnut

Custom reception counters available, please inquire.

Cubicles

The following 3 cubicle styles shown are sleek, rectilinear designs with flush base/raceway. Modern gloss white and silver metallic finishes. UL-listed, CSA-certified 8-wire, 4-circuit electrical. 5 panel widths x 4 panel height/styles. Genuine tempered glass available in 53"H panels. Full range of storage and lighting options.

C24034



3-Pack, 6X6 L-shape workstations, flipper door overhead, LED lighting, fixed pedestals, silver finish, drift fabric, white work surfaces.

2 height combinations:
H: 67" and H: 53"

C24035



6-Pack, 5X5 L-shape workstations, fixed pedestals, white finish, drift fabric, white work surfaces.

H: 39"

C24038



6-pack, flipper door overhead, fixed pedestal, white finish, drift fabric, urban walnut work surfaces.

W: 48" H: 67"

The following 3 cubicle styles shown are sleek, rectilinear designs with flush base/raceway. Modern gloss white and silver metallic finishes. UL-listed, CSA-certified 8-wire, 4-circuit electrical. 5 panel widths x 4 panel height/styles. Genuine tempered glass available in 53”H panels. Full range of storage and lighting options.

C24033



6X6 L-shape workstation, overhead shelf, fixed pedestals, white finish, drift fabric, white work surfaces

H: 53” with or without glass

C24036

6X8X6 U-shape with transaction counter, flipper door overhead, fixed pedestals, silver finish, drift fabric, white & custom work surfaces

H: 53”, 67”, and 39”



C24037



14X5 double L-shape with shared work surfaces, O-legs, mobile pedestals, white finish, drift fabric, urban walnut work surfaces

H: 39”

Lecterns

C28171



2-pc Lectern

Made up of separate top and bottom pieces. The complete unit comes with castors and an adjustable shelf in the bottom section.

W: 26" D: 24" H: 47-1/2"

C28170



Lectern - Removable Top

This is the removable top section that separates from the bottom.

The top can be sold separately.

W: 26" D: 24" H: 15-3/4"

C28172

Available in additional wood finishes.

W: 19" D: 15" H: 42"



Salon Furniture & Accessories



Salon Chairs

C28226



Styling chair with hydraulic mechanism. Black only. Matching dryer chair and shampoo unit available.

W: 24" D: 30" H: 38"

C28227



Styling chair.

W: 24.5" D: 30" H: 38"

C28229



Versatile styling, shampoo, and facial chair. Black only.

W: 26" D: 30" H: 41"

C28228



Hydraulic all-purpose salon chair. Footrest is split into two halves to easily rotate to the side of the chair and out of the way. Removable arm to permit side entry when desired. Available in Black, Charcoal, Grey, Chocolate or Saddle.

W: 26" D: 36" H: 34"

Seat: W: 22" D: 20"

Footrest: W: 15" D: 7" H: 3"

Displayed are some examples of products that C2 can provide. More products and variations are available, please inquire.

C28230



Shampoo chair with backwash unit and tilting porcelain bowl. Black only.

W: 24.5" D: 60" (foot rest extended) H: 25"

C28231



Shampoo chair with 2 position seat and back. Black only.

W: 23.5" D: 24" H: 35"

C28233



Shampoo chair with leg rest and manual tilting. Black only

W: 23.5" D: 24" H: 35"
Recline height: 29"

C28232



Dryer chair. Black only.

W: 24" D: 32" H: 35.5"

C28235



Hydraulic facial table with 360° swivels and lock in place mechanism. Removable armrests. Available in black or white.

W: 33" D: 72" H: 23-30"

C28250



Portable massage table with adjustable face rest and front arm support. Available in Agate, Navy, Burgundy, Purple, Teal, Creme or Black. Carrying case included.

W: 30" D: 73" H: 24-34"

C28234



Pedicure chair with ottoman. Doubles as Dryer Chair. Includes bath with hygienic liners. No plumbing or Electrical. Available in Black, Charcoal, Chocolate or Camel. Other colors are available.

W: 30" D: 34" H: 37.75"

Seat height: 22"

Pullout for foot spa extends 20"

Ottoman on casters w/drawer: W: 16" D: 16" H: 16"

Salon Wet Stations & Dryers

C28237



C28238



Salon wet station with 2 drawers, cabinet with adjustable shelf, accessory holder, shampoo bowl and lift lid included. Available in standard salon laminates shown below.

Shampoo cabinet includes faucet, spray hose, vacuum breaker and accessories. Available in standard salon laminates shown below.

W: 48" D: 16" H: 39" and 78" (with mirror)
Mirror: W: 36" H: 42"

W: 30" D: 16" H: 32"

C28237 & C28238 are available in colour options C240 to C247:



C240 - Graphite Nebula
C241 - Limber Maple
C242 - Cafelle
C243 - Wild Cherry
C244 - Fusion Maple
C245 - Shaker Cherry
C246 - Black
C247 - Brighton Walnut

C28239



C28240



Portable hair dryer available with or without wheels.

W: 12.25" D: 6.5" H: 23.75"



C28241

Styling station and cabinet with pullout breadboard, two drawers, fully equipped tip-out tool panel. 6 outlet power strip.

W: 48" D: 16" H: 78" | Mirror: W: 30" H: 48"

* Refer to bottom of page for colour options.

C28242

Styling Station with storage cabinet.
Upper section includes 2 adjustable shelves.

W: 54" D: 16" H: 81" | Mirror: W: 36" H: 48" | Ledge: W: 36" D: 8"

* Refer to bottom of page for colour options.



C28244



Styling Station with canopy and lights, storage cabinet with 2 adjustable shelves, pullout breadboard, drawers, deep utility drawer and tip-out tool panel with tool holders, 6 outlet power strip.

Framed mirror included.

Other colors are available.

W: 54" D: 16" H: 81" | Mirror: 36 X 48" | Ledge: W: 36" D: 8"

* Refer to bottom of page for colour options.

C28243

Storage Cabinet with 2 adjustable shelves.
Available in standard salon laminates.

W: 18" D: 16" H: 81"

* Refer to bottom of page for colour options.



All items on pg. 67 are available in colour options C240 to C247:



C240 C241 C242 C243



C244 C245 C246 C247

C240 - Graphite Nebula
C241 - Limber Maple
C242 - Cafelle
C243 - Wild Cherry
C244 - Fusion Maple
C245 - Shaker Cherry
C246 - Black
C247 - Brighton Walnut

Salon Styling/Manicure Tables & Accessories

C28245



Manicure table with 15" drawer with storage cabinet and adjustable shelf, casters, padded upholstered arm rest, black lamp included.

W: 42" D: 18" H: 30"

C28246

Manicure table with drawer, casters, padded upholstered arm rest, black lamp included.

W: 32" D: 18" H: 30"



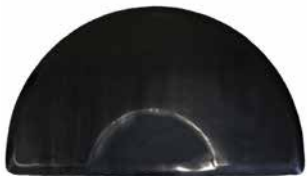
C28247



Portable styling station with t2 drawers, cabinet with adjustable shelf, pullout breadboard, accessories holder, 6 outlet power strip, casters and finished back.

W: 24" D: 16" H: 40"

C28236



Half circle floor mat. Black only.
W: 36" X 60" 1/2" thick.

C28249



Mobile utility tray.

W: 14" D: 14" H: 32"



Healthcare Furniture & Accessories

Contents

Treatment Tables & Mattresses	64
Stools	66
Cabinets	67
Patient Room Accessories	68
Personal Protective Equipment	69
Healthcare Seating	71
Recliners	75
Sleepers	78
Modular Seating	80
Benches	81
Tables	82
Dressers	83
Wardrobes	84
Bedside Tables	85

Displayed are some examples of products that C2 can provide. More products and variations are available, please inquire.

Treatment Tables & Mattresses

C28119



All laminate surface.
 Welded steel pull-out steep stool.
 Pullout laminate leg that extends the table's length.
 Side door storage access from either side.
 Two drawer storage at the foot of the table.
 Adjustable pneumatic back rest.
 Paper dispenser included.
 Extra paper roll storage.
 400 lb load capacity under normal use.
 * Colour options listed below.

W: 28-1/2" L: 58" (72" extended) H: 31"
 Step Stool: L: 16-7/8" W: 19-1/2" H: 7-3/4"

C28120

Laminate Treatment Table with stool and adjustable back rest.
 All laminate surface.
 3 drawers and storage shelf.
 18" stool that stores neatly under shelf.
 400 lb capacity under normal use.
 * Colour options listed below.



2 sizes available:
 D: 72" L: 27" H: 31"
 D: 72" L: 30" H: 31"

C28119 & C28120 are available in colour options C21 to C212 and finished C213 to C216.



C213 = Grey
 C214 = Dark Cherry
 C215 = Maple
 C216 = Slate Grey



C21 = Desert Tan
 C22 = Gunmetal
 C23 = Country Mist
 C24 = Wedgewood
 C25 = Royal Blue
 C26 = Warm Grey
 C27 = Black
 C28 = Burgundy
 C29 = Cappuccino
 C210 = Palm Coast
 C211 = Purplegrey
 C212 = Slate Blue

C25070



Two front and two side storage drawers.
 Pneumatic spring-assisted back adjustment.
 Seamless, easy-to-clean healthcare grade vinyl top.
 Height-adjustable leveling glides.
 Pull-out footstool with non-slip surface.
 4-position stirrups.
 Options:
 Hospital-grade electrical receptacle.
 Drawer warmer kit.
 Pelvic tilt.

C25071

This table includes hands-free foot control with hi-low power back.
 Seamless, easy to clean removable healthcare grade vinyl top.
 Front storage drawer.
 Pelvic tilt.
 Drain pan.
 Fold away stirrups.



C25071



3 Models available: Shelf, no Shelf, Shelf & Storage Drawers.
 Seamless, easy-to-clean healthcare grade vinyl top.
 Oversize height-adjustable leveling glides.
 Options:
 Pneumatic spring-assisted elevating backrest.
 Custom Vinyl, laminate and powder coat finishes.
 Custom heights available.
 Cal TB 133 Compliance.
 Moisture Barrier.

C25073



C25074 - Built-In Pillow



A resilient mattress designed to enhance patient safety and comfort, featuring 5 distinct pressure reduction zones, cooling technology and inverted welded seams.
 Seams designed to resist bed bugs and contaminants.
 5 distinct pressure reduction zones to increase patient comfort.
 Cooling technology helps dissipate heat.
 Air flow through zoned channels improves air circulation.
 Custom sizes available.

Stools

C28122



15" seat diameter x 18-23" adjustable height.
2" dual wheel hooded casters.
21" black nylon 5-leg base.

C28122 & C28123 are available in colour options C21 to C212.

C28123



C21 C22 C23 C24



C25 C26 C27 C28



C29 C210 C211 C212

C21 = Desert Tan	C27 = Black
C22 = Gunmetal	C28 = Burgundy
C23 = Country Mist	C29 = Cappuccino
C24 = Wedgewood	C210 = Palm Coast
C25 = Royal Blue	C211 = Purplegrey
C26 = Warm Grey	C212 = Slate Blue

C28121

Rubber tread for safety.
All welded steel base and top (no screws or rivets).
Durable chrome finish.
350 lb weight capacity.

W: 14.25" D: 11.25" H: 9"



C28248



Available in white or black.

Adjustable height: 18 to 22"
Seat: 12" diameter

Cabinets

C28124



Base Cabinet with 2 Doors:
W: 24" D: 18-1/4" H: 35"H
1 adjustable shelf behind each door.
3-1/4" backsplash included with top.

Wall Cabinet with 2 Doors:
W:24" D: 12" H: 24"
1 adjustable shelf.

C28125



Base Cabinet with 2 Doors & 2 Drawers:
W:36" D: 18" H: 35"
1 adjustable shelf behind each door.
Adjustable-self closing doors.
3-1/4" backsplash included with top.

Wall Cabinet with 2 Doors:
W: 36" D: 12" H: 24"
1 adjustable shelf.

C28126



Base Cabinet with 3 Doors & 2 Drawers
(shown with optional sink):
W: 42" D: 18" H: 35"
1 adjustable shelf behind each door.
Adjustable-self closing doors.
3-1/4" backsplash included with top.

Wall Cabinet with 2 doors:
W: 42" D: 12" H: 24"
1 Adjustable shelf.

C28127



Base Cabinet with 4 Doors & 2 Drawers
(shown with optional sink):
W: 48" D: 18" H: 35"
2 adjustable shelves - 1 behind each door.
3-1/4" backsplash included with top.

Wall Cabinet with 2 Doors:
W: 48" D: 12" H: 24"
1 adjustable shelf.

C28128



Base Cabinet with 5 Doors & 3 Drawers
(shown with optional sink) :
W: 66" D: 18" H: 35"
2 adjustable shelves behind each set of doors.
3-1/4" backsplash included with top

Wall Cabinet with 3 Doors:
W: 66" D: 12" H: 24"
2 adjustable shelves.

Features on all cabinets:
All laminate construction.
4 adjustable leveling feet on the base units.
3-way adjustable, soft-close, Euro-style hinges.
Euro-style drawers with metal sides & 75 lb capacity.
Recessed toe kick in high pressure slate grey laminate.
Easy hook and rail wall cabinet installation.

All cabinets available in colour options C213 to C216.



C213 = Grey
C214 = Dark Cherry
C215 = Maple
C216 = Slate Grey

Patient Room Accessories

C28129



UL approved lamp & cord.
Grounded three-prong cord.
Chrome finish pole & base.
Inner/outer cool shade system.
60 watt incandescent bulb.
Flexible gooseneck arm.

Base Diameter: 11"
Height Range: 50"-74"

C28130

5 leg black nylon base instrument stand.

Base: DIA - 21" H: 31 to 50"
Tray dimensions: W: 12.75" L: 19" $\frac{3}{4}$ " thick



C28132



Aluminum uprights.
2 push handles with shelves rimmed on all sides.
Opening between shelves: 10-1/2".
3 plastic shelves: W:15-1/2" L: 19-1/2".
200 lb load capacity under normal use.

W: 22-3/4" D: 16" H: 29"

C24031



Safe sharp collector disposal.

C28131



20 quart /18.9L
Stainless steel outer shell and lid.

D: 14" (plus pedal) H: 17-3/4"

C28133



Examination supply jars.
Sold in sets of 5 with clear tops.
D: 4 3/8" H: 6 1/2"

Personal Protective Equipment

C24034



4 - Ply Disposable Mask.
CE Certified.

C24035



N95 Medical Masks.
FDA Certified.
CE Certified.

C24036



KN95 Civil Masks.
EN149 Test.

C24037



Face Shield.
Foam forehead band,
1/2" wide woven
plastic, 250 micron PVC
material.

C24038



Virta LITE PF Gloves:
Small, medium, large.

C24039



Yellow Double-Dipped
PVC Gloves.

C24040



Infrared Hand Held
Thermometers.
FDA Certified.
CE Certified.

C24041



Variety of hand sanitizers available
including alcohol-free sanitizers .

C26058



Isolation Gown SMS.
Fluid Resistant Regular
Size.
Latex-Free - Blue.

C24043



Reusable Isolation Gown
- Tyvek Material for liquid
resistance. One size fits
all, elastic wrist bands,
adjustable body size.

C24042



Disposable Isolation Gown
- Meets FDA level 1, 2, and
3 protective gown guidance.
ASTM F2407-06 Liquid
Penetration Test ATCC 42.



C24046

C24045



Can be used with soap or hand sanitizer.
Touchless



No contact with hands.
100% mechanical - no batteries.
Rust proof powder coated aluminum with steel base.
Simple press down on the foot pedal will dispense the sanitizer directly onto your hand.
Comes with felt pads on the underside of the base to protect floors and reduce noise.

H: 39"

C26034

C24044



Rust proof, durable, powder coated steel construction.
Holds 1 gallon of sanitizer.
H: 40.5"



Pressure PSI 100.
Solution spray rate gpm .05.
Continuous spray time (one battery w/ charge): 8 hours.
Voltage: 12 volts.
Wheels: 3".
Compact height for storage/transport: 22.5".
Sound level dBA: 30.
Weight (including battery): 32 lbs.

Prevention is the best medicine. This hospital-grade misting system is specifically designed for use with disinfectants that are EPA approved. Reduce the risks of Health Care Acquired Infections by killing virus, bacteria and mold faster, safer and quieter. Misting provides higher efficacy by improving coverage more efficiently than spray wipe methods and wipes. It delivers disinfectant into hard to reach corners and crevices found in many healthcare facilities.

W: 13.5" L: 19" H: 39.5"

Healthcare Seating

C215012 -
Behavioural Health



This seating provides durability, safety and an attractive aesthetic.

All fasteners are tamper-resistant
Wallsaver leg design protects walls from damage.

Available in 21", 24" or 31" seat widths

C24020 -
Behavioural Health



All fasteners are tamper-resistant.
Steel seat pan conceals upholstery staples.
Clean-out space between seat and back.
Available with open arms or upholstered arm panels.
Available in single, bariatric, 2-Seat and 3-Seat configurations.
Two & three seater available with or without centre arms.

C24023 -
Behavioural Health



This seating is strong, exceptionally comfortable and safe.
Oval tubing and an easy-to-clean one-piece contoured seat and back.

All fasteners are tamper-resistant.
Steel seat pan conceals upholstery staples and adds weight.
Simple one-piece seat/back is comfortable and easy to clean.

Available in 18" or 22" seat widths.
Available with 4x Post Legs or Sled Base.
Sled Base option available with arms.

C24016



These chairs meet all practical requirements for any healthcare lobby, lounge or general waiting environment.
Exceeds BIFMA Seating Durability test to 500 lbs.
Seat covers, back covers and arm caps can be easily replaced if necessary.
Wall-saver design frame design protects wall from damage.
Clean-out spacing between seat and back.
Available in 21", 24" and 31" seat widths.
Multiple-seat units available with full, half or no intervening arms.
Available Styles: Single seater, Bariatric, High-back, Hip Chair, two-seater, three-seater.

C25000



18.5" seat width, stack 6 high

C25001



22" seat width, stack 6 high

C25002



26" seat width, stack 6 high

C25005



18.5" seat width, stack 6 high

C25006



22" seat width, stack 6 high

C25007



18.5" seat width, stack 6 high

C25003



18.5" seat width, stack 6 high

C25004



22" seat width, stack 6 high

C25008



22" seat width, stack 6 high

Behavioural Health Heavy Duty Chair

Ideal for common rooms, and dining areas, and its compact footprint makes it ideal for patient room seating. The chair is available with arms or armless and in three seat widths. In addition, it rests on a sturdy H-base. Limited Lifetime Warranty. Clear, non-marring glides protect floors from damage.

- All fasteners are tamper-resistant
- Sled base enables frame to be bolted to floor
- Steel seat pan conceals upholstery staples and adds weight
- Available in 3 seat widths: 18.5", 22" and 26"
- Nylon glides are non-removable and protect floors from damage

C25018 - Behavioural Health



18.5 seat width

C25019 - Behavioural Health



18.5" seat width with arms

C25020 - Behavioural Health



22" seat width

C25021 - Behavioural Health



26" seat width - bariatric chair

C215011 -
Behavioural Health



Exceeds BIFMA Seating Durability Test to 500lbs per chair.
All fasteners are tamper-resistant.
Powder-coated steel sled base can be bolted to the floor.
Steel seat pan conceals upholstery staples.
Concealed clean-out space between seat and back.
Available in Single Seater, Single Bariatric Seat, Two Seater or Three Seater.

C24018 -
Behavioural Health



Inner steel seat frame is anchored to wood end frames with metal-to-metal fasteners.
Wallsaver leg design protects walls from damage.
All fasteners are tamper-resistant.
Steel seat pan conceals upholstery staples.
Clean-out space between seat and back.
Available in Single Seater, Single Bariatric Seat, Two Seater or Three Seater.
Two & three seater available with or without centre arms.

C24022 -
Behavioural Health



Features many design considerations that deter misuse and mishandling.
No exposed fasteners.
No exposed upholstery staples.
Non-removable seat cushion.
Non-removable legs.
Available in Single Seater, Two Seater or Three Seater.

C24021- Behavioral Health



This heavy-duty glider provides a secure method for bringing motion into challenging environments without sacrificing the safety of patients, visitors and care-givers.
No exposed staples.
Non-removable glides.
Tamper-resistant fasteners.
Ample clean-out space between seat and back.
Available in mid or high-back.

C25011



C25012



Carson Lounge Seating Collection offers a clean profile that conceals a structural steel framework and ensures a high level of durability.

Recliners

C28080



STANDARD FEATURES

Cable release with frame mounted pull lever.
Reading/tv position and full recline position.
Wall saver mechanism (requires 6" space from wall) with either the cable release or the optional electric recline mechanism.
The wall saver mechanism is not available when the electric lift mechanism is ordered.
Recliner mechanism is rated to 360 lbs

OPTIONS

Electric recline with remote control or installed buttons with infinite recline positions.
Electric lift & recline with remote control or installed buttons.

W: 35" D: 36.25" H: 41"
Seat: W: 22" D: 20"
Arm height: 24.25"

C28081



STANDARD FEATURES

Push back manual mechanism.
Reading/tv position and full recline position
High leg style.
3 way recline mechanism rated to 350 lbs.

OPTIONS

Electric recline with remote control or installed buttons with infinite recline positions.

W: 32" D: 33" H: 43.25"
Seat: W: 22" D: 20"
Arm height: 25.25"

C28082



STANDARD FEATURES:

Push back manual mechanism.
Reading/tv position and full recline position
High leg style.
3 way recline mechanism rated to 350 lbs.
"Easy exit" notched arm.

OPTIONS:

Electric recline with remote control or installed buttons with infinite recline positions.

W: 28.5" D: 32.25" H: 43.5"
Seat: W: 22" D: 20"
Arm height: 25.25"

C28083



Standard Features:

Push back manual mechanism.
Reading/TV position and full recline position
2 way recline mechanism.
Features a contoured back for extreme comfort.
Has a no sag seat and webbed back.
Matching waiting room seating (tandem seating) is available.
Matching stationary resident room seating available.

W: 26" D: 33" H: 43"
Seat: W: 21.5" D: 20"
Arm height: 23.5"

C215013

This recliner is designed to meet the demands of increasingly smaller patient and resident rooms. Combines the qualities of a typical highback patient chair with a healthcare-grade recliner. Pneumatic cylinder provides infinite back recline. Replaceable upholstery covers. Easy-to-clean design. Large, contoured headrest. Easy-to-activate reclining mechanism. Available with or without locking casters.



C24022



This recliner is designed for the demands of the 24/7 healthcare environment, the comfort of the patient and the caregiver's ease of use. 500lb static load weight rating. Inner back frame constructed with steel instead of plywood. Extended armcaps assist in patient ingress and egress. Side lever permits both caregiver and patient to operate footrest. Infinite recline positioning. Ergonomically-positioned push handles for transport.

C25015



Available in 23" and 26" seat widths. Field-replaceable upholstery covers. 500lb. static load weight rating. Inner back frame features 14 gauge steel structure. Side lever positioning permits both caregiver and patient to operate footrest. Trendelenburg feature.

C25016



Options:

Ergonomically-positioned push handles. Optional arm caps in wood, rigid polyester or solid surface. Central locking caster system. Side-mount tablet with 360° swivel. Flip-up side tablet. Slide-out foot rest. Extended recline feature. IV pole and holder. Accessory hook. CAL TB 133 Compliance. Moisture Barrier.

C28078



STANDARD FEATURES

Anti-microbial wood or anti-microbial black urethane arm caps.
Cable release with frame mounted pull lever.
Reading/tv position and full recline position.
Wall saver mechanism available on some models.

OPTIONS

Electric lift available.
Available with or without casters (set of 4 - 2 back casters are locking).
Electric lift & recline with remote control or installed buttons.
Pushbar



Weight capacity: 360 lbs
W: 30.75" D: 35.25" H: 45.5"
Seat: W: 22" D: 20"
Arm height: 24.5"

C28079

STANDARD FEATURES

Cable release with frame mounted pull lever.
Reading/tv position and full recline position.
Wall saver mechanism (requires 6" space from wall) with either the cable release or the optional electric recline mechanism.
The wall saver mechanism is not available when the electric lift mechanism is ordered.
Recliner mechanism is rated to 360 lbs.

OPTIONS

Electric recline with remote control or installed buttons with infinite recline positions.
Electric lift & recline with remote control or installed buttons
Cupholder.

W: 34" D: 37.25" H: 41.25"
Seat: W: 22" D: 20"
Arm height: 24"



Sleepers

C25025



C215015



This sleeper sofa opens from the side to conserve space in cramped patient rooms. Its central locking caster system – operated by a pedal – allows caregivers and cleaning staff to reposition the Sleeper with ease.

Central Locking Caster system activated by easy-access pedals.

Large, 28 x 80 sleep surface.

All upholstery is field-replaceable.

C25026

Sleeper combines healthcare-grade durability with an appealing residential aesthetic.

Heavy-duty steel mechanism.

3 comfortable positions: Sit, Chaise, and Sleep.

Very accommodating sleep surface of 80”.

Wall-saver design protects walls from damage.

Field-replaceable arm caps.



C28093



All fold-out chair beds have a 24” wide mattress covered with Staph-Chek, anti-bacterial, and FR ticking.

W: 32.75” D: 32” H: 41.25”

Seat: W: 22” D: 19”

Arm height: 24.5”

C28092

Flip the back cushions up to convert this 3 seat sofa into a bed. This model is made with low arms is designed to be comfortable when lying down. Available with side bolster cushions that can function as pillows.

W: 32.75" D: 32" H: 41.25"
Seat: W: 22" D: 19"
Arm height: 24.5"



C25028



User-friendly, easy to clean, and highly accommodative to the space constraints of patient rooms. Available as a Sleep Sofa with back and arms, or a compact Bench Sleeper with a small footprint, and can be specified according to the space available.

W: 76" D: 35"



Modular Seating

C24024



C24025



C24026



C24027



C24026



C24027



Whether you have a small or large space catering to children or adults, this collection provides plenty of seating options for either collaboration or independence and enables you to create your unique look and layout.

Wide range of different modules for increased versatility.

Engineered plywood and bracketing provide enhanced durability.

Nylon-webbed seat deck ensures ultimate comfort.

A heavy-duty ganging system is intuitive and easy to install.

Choice of wood or metal leg.

Benches

C25022 - Behavioural Health



C25023 - Behavioural Health
Health



C25024 - Behavioural Health



These benches are built to the highest standard of quality and offer a choice of 2-seat or 3-seat configurations with solid surface and power/USB options.
Exceeds BIFMA Seating Durability test to 500lbs per bench.
Robust 14 gauge steel framework.
Seat cushions can be easily replaced if necessary.

C24019 - Behavioural Health

14-gauge internal steel seat frame for enhanced structural integrity.
Seat cushions can be easily replaced if necessary.
All fasteners are tamper-resistant.
Steel seat pan conceals upholstery staples.
Nylon glides are non-removable and protect floors from damage.
Available in single, bariatric, 2-Seat and 3-Seat configurations.



Tables - Behavioural Health

C25032



DIA: 30" H: 20"
OR DIA: 30" H: 16"

C25033



DIA: 36" H: 20"
OR DIA: 36" H: 16"

C25034



DIA: 24" H: 20"
OR DIA: 24" H: 16"

C25030



DIA: 20" H: 20"
OR DIA: 20" H: 16"

C25031



DIA: 24" H: 20"
OR DIA: 24" H: 16"

This table is perfect for behavioral health facilities. It's surface makes it extremely durable and easy-to-clean. Overall, the unique appearance helps provide an environment that feels less institutional.

C25029



C25035



DIA: 20" H: 20"

C25036



DIA: 24" H: 16"

C25037



DIA: 36" H: 16"

This table is great for both healthcare and behavioral health environments. This table provides a weighted steel plinth base for extra protections against damage and to discourage mishandling. A wide range of standard laminate and powder coat finishes are available, plus custom sizes may be specified.

C25064



This overbed table is a solid, dependable table designed as an economical option that offers great value. A spring-assisted lift mechanism allows the tabletop to be raised with minimal upward pressure. It has a thermoformed top with spill containment.

H: 28" to 45"

Dressers

C25041



W: 32"
3 drawer

C25042



W: 34"
4 drawer

C25051



W: 32"

C25052



W: 32"

C25058



W: 32"

C25059



W: 32"

Please inquire about the different finishes that are available.

Wardrobes

C25043



Left-hinged W: 24"
Right-hinged W: 24"

C25044



Left-hinged W: 24"
Right-hinged W: 24"

C25060



Left-hinged W: 24"
Right-hinged W: 24"

C25061



Left-hinged W: 24"
Right-hinged W: 24"

C25045



W: 36"

C25046



W: 36"
1 drawer

C25062



W: 36"

C25063



W: 36"
1 drawer

C25053



W: 36"

C25054



W: 36"

Please inquire about the different finishes that are available.

Bedside Tables

C25038



W: 20" H: 24" OR
W: 20" H: 30"

C25039



W: 20" left-hinged
W: 20" right-hinged

C25040



W: 20"
3 drawer

C25049



W: 20" left-hinged
W: 20" right-hinged

C25050



W: 20"
3 drawer

C25055



W: 20" left-hinged
W: 20" right-hinged

C25056



W: 20"
3 drawer

C25057



W: 20" left-hinged
W: 20" right-hinged

Please inquire about the different finishes that are available.



Outdoor Furniture

Contents

Collections	87
Outdoor Garden & Dining Seating	92
Outdoor Tables	95
Recycled Plastic Collection	97
BBQs	102

Displayed are some examples of products that C2 can provide. More products and variations are available, please inquire.

Collections

C27028



C27029



C27030



C27031



Durable UV resistance dark brown resin woven over sturdy rust-proof aluminum frame, foam cushion.
Over 50 fabrics to choose from.

C27003



C27004



C27005



This collection offers a thick durable weave in a warm earth tone color. Rust-resistant aluminum frames, virtually weatherproof and maintenance-free, so you can leave it outdoors all year round.
Choose your fabric to customize this collection and make it perfect for every space.
Over 50 fabrics to choose from.

C27006



C27007



42" Wide

This collection is perfect for smaller spaces. The close weave of the all season wicker shows off its distinct European Style.
Choose your fabric to customize this collection and make it perfect for your style.
Over 50 fabrics to choose from.

C27012



C27013



C27015



C27014



C27016



C27008



C27009



C27010



C27011



A casual, relaxed woven collection.
Extensive line of curved and straight sectionals, deep seating chairs and sofas, and dining chairs.
Available in Smoke and Hickory.
Over 50 fabrics to choose from.

C27018



C27019



C27020



C27017



C27021



A stunning aluminum group that looks like real wood, without any of the maintenance. This collection's elegant design is matched only by its unbeatable comfort. Over 50 fabrics to choose from.

C27022



C27023



C27024



C27027



C27025



C27026



Woven of thick, braided resin in Smoke Grey finish, wrapped tightly over powder-coated aluminum frames, coupled with the deep, high resilient seating durable enough to withstand any harsh weather elements. Highly polished, finishing on sturdy chaises base frame and tapered legs add structural integrity to the piece.

Over 50 fabrics to choose from.

C28173



C28174



C28175



C28176



Aluminum frame available only in brown. Available in 28 fabrics.

W: 28" D: 35.5" H: 35.5
Arm height: 25"

W: 28" D: 38.5" H: 40"
Arm height: 25"

W: 52.75" D: 35.5" H: 35.5"
Arm height: 25"

W: 77.5" D: 35.5" H: 35.5"
Arm height: 25"

C28177



C28178



C28179



Woven Resin over an aluminum frame. Available in Hazel Brown. Available in 28 fabric options.

W: 30.5" D: 38.5" H: 38"
Arm height: 25"

W: 56.5" D: 38.5" H: 38"
Arm height: 25"

W: 82" D: 38.5" H: 38"
Arm height: 25"

C28180



C28181



C28182



Aluminum frame available in taupe. Available in 28 fabric options.

W: 32" D: 32.5" H: 33.5"
Arm height: 25"

W: 56.75" D: 32.5" H: 33.5"
Arm height: 25"

W: 81.25" D: 32.5" H: 33.5"
Arm height: 25"

C28187



Aluminum ash grey frame.
Available in 28 fabrics.

W: 32.5" D: 34" H: 33"
Arm height: 23.5"

C28188



Aluminum brown frame.
Available in 28 fabrics.

W: 82.5" D: 35.5" H: 33"
Arm height: 23.5"

C28185



W: 28.5" D: 35" H: 35"
Arm height: 24"

C28186



W: 52.5" D: 35" H: 35"
Arm height: 24"

The cushions shown can be made for indoor or outdoor use with "Dry-Fast" foam.
All items are woven resin over an aluminum frame.
Available in chocolate. Available in 28 fabric options.

*Also available in a sofa: W: 75.5" D: 35" H: 35"
Arm height: 24"



Outdoor Garden & Dining Seating

C28194



The water repellent cedar bench is made with powder coated galvanized steel to prevent rusting. The bench is made according to the width specified by the client and can be made in sections to make up a wall bench. The bottoms of the legs are sealed with black plastic caps.

W: *choice D: 24" H: 33.75"

C28193



Aluminum frame available in ash grey.

W: 25" D" 25" H: 12"

C28191



Woven Resin over an aluminum frame
Available in Chocolate.

W: 48" D" 25.5" H: 37.5"
Seat height: 19"

C28195



Seat cushions are available.
Available in Black.

W: 44" D: 24" H: 35.5"

C28214



Available in Black.
Seat cushions are available.

W: 24.5" D: 24" H: 35.5"

C28212



Items are woven resin over an aluminum frame.
Available in chocolate.

W: 23" D: 22.5" H: 33.5"
Arm height: 25.5"

C28213



W: 21.5" D: 22" H: 33"
Arm height: 25"

C28208



The cushions shown can be made for indoor or outdoor use with "Dry-Fast" foam with 28 options of fabric available.
All items are woven resin over an aluminum frame.
Available in chocolate.

W: 32" D: 24.5" H: 35"
Arm height: 26"

C28209



W: 18.5" D: 26" H: 35"

C28210



Aluminum frame available in ash grey.
28 fabric options available.

W: 25" D: 23.5" H: 34"
Arm height: 25"

C28211



W: 19" D: 23.5" H: 34"

C23018



W: 25" D: 21" H: 32.5"
Seat Height: 18"

C23020



W: 25" D: 21" H: 38.5"
Seat Height: 24"

C23019



W: 25" D: 21" H: 32.5"
Seat Height: 18"
Arm Height: 24"

These sturdy pieces, created with solid aluminum frames, offer tremendous resistance to wind, salt, sun, and snow. Ideal for environments with unpredictable weather or locations such as balconies and terraces where strong wind resistance is crucial.

Both armed and armless seating styles are stackable.

C28217



C28215



C28216



W: 18.5" D: 21.5" H: 33.5"

C28220



C28218



C28219



W: 22.5" D: 21.5" H: 33.5"
Arm height: 25"

Aluminum Frame with Plasti-Wood seat & back.

Available in:
Espresso with onyx aluminum.
Grey with silver aluminum.
Teak with silver aluminum.

Outdoor Tables

C28198



Aluminum coffee table in taupe.

W: 47" D: 23.25" H: 16"

C28197



W: 23.25" D: 23.25" H: 22.5"

C28200



Includes clear tempered glass top shown.
Made with woven resin over an aluminum frame.
Available in chocolate.

W: 48.5" D: 26" H: 18"

C28199



W: 20.5" D: 20.5" H: 18"

C28204



Aluminum coffee table in ash grey.

DIA: 39.5" H: 16"

C28205



DIA: 22" H: 21.5"

C28207



Aluminum Coffee Table.
Available in brown.
Aluminum Slat Top.

W: 36" D: 15" H: 17"

C28206



Available in black.

W: 18" D: 18" H: 17"

C28202



Aluminum Coffee Table.
Available in brown.
Aluminum Slat Top.

W: 23.5" D: 23.5" H: 22"

C28201



Woven resin end table with an
aluminum slat top.
Frame in hazel brown resin
with brown aluminum slat top.

W: 20" D: 20" H: 21"

C28196



Aluminum Coffee Table.
Available in brown.
Aluminum Slat Top.

W: 23.5" D: 23.5" H: 22"

C28203



Includes clear, tempered
glass.
All items are woven resin over
an aluminum frame.
Available in chocolate.

W: 20" D: 20" H: 23"

C28221



Clear tempered Glass & Umbrella hole.
Woven resin over an aluminum frame.
Available in chocolate.

DIA: 48" H: 29.5"

C28222



Clear tempered Glass & Umbrella hole.
Woven resin over an aluminum frame.
Available in chocolate.

W: 38" D: 38" H: 29.5"

C28223



Aluminum Coffee Table.
Available in brown.
Aluminum Slat Top.

W: 23.5" D: 23.5" H: 22"

C28225



Available in black.

2 sizes available:
DIA: 42" H: 29.5"
DIA: 48" H: 29.5

C28224



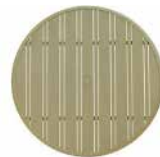
Aluminum Coffee Table.
Aluminum Slat Top.

W: 23.5" D: 23.5" H: 22"

Available in 2 colours:



BROWN



TAUPE

Recycled Plastic Collection

C27033



C27038



C27032



C27035



C27034



C27037



C27036



C27039



Adirondack sits deep with a contoured seat and back. They can be used for residential or commercial use, are ergonomically designed, and are available in a large selection of fade resistant designer colors. They are made from heavy 7/8" gauge plastic lumber, all stainless steel hardware, require no painting, and are completely waterproof.

*Available in 19 colours

W: 31" D: 32" H: 41"
Seat height: 16"

C27041



C27040



C27042



C27045



C27043



C27044



Kick up your heels, and your comfort level, by adding a footrest to your Adirondack chair. This addition to your collection is made from the same durable plastic, and is available in all of our designer colours.

*Available in 18 colours.

C27046



Black

C27049



Beige

C27050



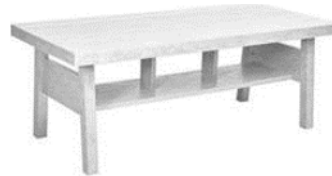
Brown

C27047



Grey

C27048



White

Simple, sleek, contemporary and offers multiple modular configurations to accommodate any outdoor space. With no need for indoor storage, this collection will provide years of lasting comfort and convenience.

*Available in 19 colours

W: 49" D: 23" H: 19"
Weight: 68 lbs



C27057



Black

C27054



Beige

C27053



Chocolate

C27056



Grey

C27055



White

C27051



Navy

C27052



Red

At 40" high, this pub pedestal table is the perfect solution for casual dining and entertaining. They can be used for residential or commercial use, are ergonomically designed, and are available in a large selection of fade resistant designer colors. They are made from heavy 7/8" gauge plastic lumber (1/2" used by competitors), all stainless steel hardware, require no painting, and are completely waterproof.

Actual table tops are the same colour as the corresponding legs.

W: 29" D: 29" H: 40"

C27059



Beige

C27058



Cedar

C27060



Chocolate

C27065



White

C27053



Slate Grey

C27053



Black

C27064



Yellow

C27062



Red

C27063



Blue

C27061



Burgundy

This garden bench is great for gardens, patios, walkways or just about anywhere. Seats 2 adults comfortably. They can be used for residential or commercial use, are ergonomically designed, and are available in a large selection of fade resistant designer colors. They are made from heavy 7/8" gauge plastic lumber (1/2" used by competitors), all stainless steel hardware, require no painting, and are completely waterproof.

W: 48" D: 24" H: 36"
Seat height: 18"

BBQs & Pizza Oven

C27068



Propane gas grill with a power side burner and infrared rear and bottom burners proves that two heads are better than one. The LED night light control knobs have near limitless color options and they also glow red when the gas is left on as a safety feature. This grill turns into a smoker with the integrated smoker tube and dedicated burner. The second head features two ceramic infrared burners that reach high heat in seconds.

C27070



C27073

C27074

C27071

C27072



A deluxe grill that delivers high-performance power with superior-grade construction, easy maneuverability and plenty of workspace for food prep. The heavy-duty hood opens easily and holds place at the desired height for easy access, while the halogen lights illuminate your entire cooking area. The built-in whisper-quiet rotisserie adds even more culinary versatility.



C27075



This grill features 644 sq. in. total cooking space including porcelain coated warming rack, 4 stainless steel burners, and stainless steel drop-down side shelves and enclosed cabinet base.

C27077

This grill features 350 sq. in. primary cooking surface and includes 3 stainless steel burners, reversible heavy-duty cast iron cooking grids, stainless steel cooking system, and electronic ignition. This series features painted steel drop-down side shelves and enclosed cabinet base.

W: 22" L: 51.8" H: 48"



C27079

This grill features 350 sq. in. primary cooking surface and includes 3 stainless steel burners, reversible heavy-duty cast iron cooking grids, stainless steel cooking system, main burner, side burner, and rear rotisserie and electronic ignition. This grill features painted steel drop-down side shelves and enclosed cabinet base.

W: 22" L: 51.8" H: 48"



C27078



This grill features 769 sq. in. total cooking space with six stainless steel burners, tuck-away - rotisserie system with flip-up motor and separate spit and fork storage, individual burner ignition system, porcelain-enameled or stainless steel lid with polished handle and trim, center-mounted thermometer, two extra large stainless steel work surfaces, stainless steel control panel, two enclosed storage areas which includes many more features.

C27076

This grill features five main burners, sear over direct heat or bake and roast using indirect easily with this grill's oven-like performance. It also features an integrated smoker tray, dedicated burner, rotisserie option, and rear/side infrared burner. This grill also turns into a charcoal grill with the optional cast iron charcoal tray. Safety features: integrated interior lights and night light, knobs that turn red when gas is left on.



C27080



Wood fire pizza oven.
Capacity: 4 pizzas.
Heat up time: 30 minutes.

W: 39" D: 35.5" H: 23.5"





Appliances

Contents

Refrigerator	106
Beverage Coolers	107
Bar Fridges	110
Freezers	111
Vending Machines & Water Cooler	112
Ovens & Stoves	114
Microwaves & Small Appliances	115
Dishwashers	116
Washers & Dryers	117
Bathroom & Common Area Accessories	119

Displayed are examples of products that C2 can provide. More products and variations are available, please inquire.

Refrigerators

C21022



21.2 Cu. Ft. Capacity.
Electronic & Touch Sensitive Controls.
Exterior Ice and Water Dispenser.
LED Interior Lighting.
Fingerprint Resistant Stainless Models.

W: 33.13" D: 33.63" H: 66.7"

C21021



18 Cu. Ft. Capacity.
Reversible Door.

W: 30" D: 30.13" H: 65.38"

C21023



Energy Star Certified.
Electronic Temperature Controls.
LED Interior Lighting.
Reversible Door Option.

W: 30.25" D: 30" H: 66.75"

C21020



18 Cu. Ft. Capacity.
Reversible Door.

W: 30" D: 30.12" H: 66"



Beverage Coolers

C21017



4.3 cu. ft. Beverage Centre Stores up to 124 cans.
 Digital Temperature range of 2°C to 18°C.
 White LED Interior Lighting.
 Reversible Door Hinge.
 Door Ajar Alarms.

W: 19.4" D: 24.1" H: 33.1"

C21018



Cu. Ft. (Capacity) Under 12.0 cu. ft.
 45 Bottles of Chilled Wine.
 Suitable for Red or White Wines Set Temperature.
 Automatic Defrost System.
 Precise Digital Thermostat LED Display.
 Reversible Door Hinge .

W: 19.4"D: 24.1" H: 33.1"

C26004



45 bottle free standing wine cooler.
Programmable temperature range of 4°C - 18°C.
Cool blue - LED lighting illuminates the interior and displays the temperatures so it can be monitored through the door.
Tempered glass door with stainless steel frame & handle.
Reversible hinge for left or right hand opening.

W: 17.5" D: 20" H: 32.7"

C21019

138-12 oz. Can Storage.
4.6 Cu. Ft. Capacity.
Precision Electronic Temperature.
Lock with Pop-out Key.

W: 21.5" D: 24.5" H: 34"



C26006



38-bottle free-standing wine cooler.
Dual temperature zones for red & white storage.
Programmable temperature range of 4°C - 18°C.
The white LED illuminates the interior and the thermostat is easily viewed through the door.
Convenient reversible door swing for left or right opening.

W: 19.4" D: 24.9" H: 33.1"

C26008



Small to medium sized commercial coolers for your commercial space.
The fridge's system cools down the interior to maintain the temperature range with a minimum energy consumption.
30 gauge durable exterior pre-painted steel.
Electronic temperature controller.
Double panel high efficiency glass door reduces condensation.
Self closing system.
LED lighting system.
Eco-friendly insulator.

3 sizes available.

C26009

1/3 HP Compressor.
Automatic Defrost Cooling System.
Painted Steel/Painted Aluminum Exterior & Interior
External Temperature Display.
Self Closing Swing Door.



Bar Fridges

C26000



3.2 cu. ft. (92 L) capacity compact refrigerator.
Energy Star® rated.
Environmentally friendly R600a refrigerant.
Full width freezer section.
Mechanical thermostat.
Integrated door handle and reversible door hinge.

W: 17.9" D: 18.5" H: 32.7"

C26001



2.6 cu. ft. (73 L) capacity compact all refrigerator.
Energy Star® compliant.
Environmentally friendly R600a refrigerant.
Mechanical thermostat.
Scratch resistant worktop.
Integrated door handle and reversible door hinge.

W: 17.7" D: 20" H: 20.9"

C26002



4.4 cu. ft. (124 L) capacity compact all fridge.
Energy Star® compliant.
Environmentally friendly R600a refrigerant.
Stainless steel door.
Mechanical thermostat.
Scratch-resistant worktop.
Interior light.
Integrated door handle and reversible door hinge.

W: 20.9" D: 21.1" H: 33.1"

C26003



3.2 cu. ft. (90L) capacity compact refrigerator.
0.91 cu. ft. (28.8L) independent freezer section.
Energy Star compliant.
Environmentally friendly R600a refrigerant.
Manual defrost system.
Interior light and mechanical thermostat.
Integrated door handle and reversible door hinge.

W: 19.5" D: 20.5" H: 33.6"

Freezers

C26010

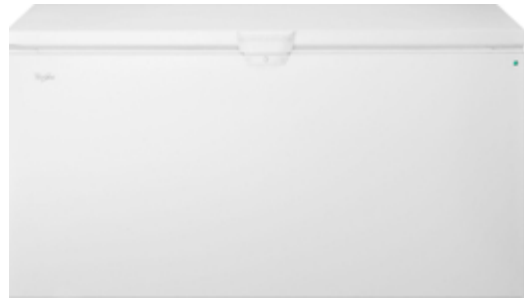


This freezer meets the EPA's environmental impact regulations.
Internal LED lighting.
Mechanical thermostat.
Equipped with durable casters.
Made of a high impact durable plastic.
Operating temperature: -12.2°C - 17.8°C
Standard colour: white

Sizes Available:

- 7.63 Cu. Ft.
- 9.43 Cu. Ft.
- 11.66 Cu. Ft.
- 14.24 Cu. Ft.

C21025



21.7 Cu. Ft. Capacity
Manual Defrost.
4 Freezer Baskets.
Freezer Door Lock w/ Key.
Power On Indicator Light.
Temperature Monitor Alarm.

W: 66.25" D: 27.25" H: 33.38"

C26011



Capacity (Cu.Ft.) 18
Temperature Range -23.3 to -12.2°F
Performs well in high temperature environments.
1/2 HP Compressor.
Mechanical Control and internal Temperature Display.
Lock & Key protects the contents of the unit.
Heavy Duty Casters.
Reversible Door.

C21026



13 Cu. Ft. Capacity.
Power Outage Assurance.
EvenTemp Cooling System.
Flexible Interior Organization System.
Door Ajar Alarm.
Frost-Free Design.
Floor-Projected Power-On Indicator.

W: 34" D: 34" H: 19"

C21024



20 Cu. Ft. Capacity.
Frost Free.
LED Lighting.
Reversible Door.

W: 33.25" D: 29.13" H: 66.75"

Vending Machines & Water Cooler

C26083



Each shelf has 5" height, allowing full product view.
Two-way rotation speeds.
Side-of-drum storage area is refrigerated for extra food and beverage items.
Health control function is computer controlled for tamper proof protection.

C26084



Ideal machine for serving fresh food, milk, water and juices.
Triple pane glass and extra insulation for energy efficiency.
Health and Safety control function software prevents the vending of unsafe product.

C26085



Two levels of freezing to accommodate both ice cream and microwaveable products. Five trays can be customized for a varied product mix. Require only a 15 amp 120 volt service. Sensit technology ensures customer receives their product. 3" layer of foam insulation ensures better insulation and lower energy costs.

C26086



Highly visible and intuitive user interface.
Dual spirals for reliable positive vend.
Deep, wide vend bucket.

C26087



Increased vertical space.
Shelf height can be adjusted.
LED light option.

C26088



Large variety snack vending machine.

W: 39" D: 35" H: 72"

C26089



Ideal for locations where space is
at a premium.
Dual spirals ensure positive
product delivery.

W: 29" D: 30" H: 72"

C26090



Non-removable stainless steel reservoir.
Available in stainless steel or appliance white exterior.
1 piece hot tank.
Tough, durable, large drip tray.
Optional WaterGuard™ feature offers no-spill bottle loading.
Handle on back enables easy transport and placement.
Optional Bottle Cover.
Energy Star Rated.



Ovens & Stoves

C21028



5.3 Cu. Ft. Capacity.
Self Clean.
Warm Zone Element.
Keep Warm setting.
Control Lock Mode.
Large Oven Window.

W: 29.94" D: 27.75" H: 36"

C21027



4.8 Cu. Ft. Capacity.
Warm Hold Option.
Manual Clean.
Oven Lockout.
Extra-Large Oven Window.
Easy Touch Electronic Controls.

W: 30" D: 27.75" H: 46.88"

C21029



6.4 Cu. Ft. Capacity.
True Convection.
Ceran Cooktop.
5 Cooktop Elements.
Hidden Bake Element.
Storage Drawer.
Aqualift Self Clean.
Panoramic Window.

W: 30" D: 27.75 H: 47.87"

C21030



Two 20,000 BTU Ultra Power Dual-Flame Burners.
5,000 BTU Simmer & Melt Burner.
Three-Level Convertible Grates.
Smart Appliance.
Three 15,000 BTU Burners.

W: 35.88" D: 27.75" H: 36"

Microwaves & Small Appliances

C26032



Large 12 cup capacity.
Easy to clean removable filter basket.
2 hour auto shut-off.
Special cleaning cycle.
Easy to see water window.
Convenient cord storage.

C26033



Choice of 1 cup size 240 ml (8 oz.).
Single-use water reservoir.
Housekeeping friendly - no mess or clean-up
Commercial model.

W: 7" D: 10" H: 11.1"

C26014



Auto shut-off and boil dry protection.
On/Off indicator light.
Built in filter and non-drip spout.

C26013



C26012



C21031



1.5 Cu. Ft. Capacity.
1200 Watts.
EasyClean Interior.

W: 21.41" D: 17" H: 12.13"

C21032

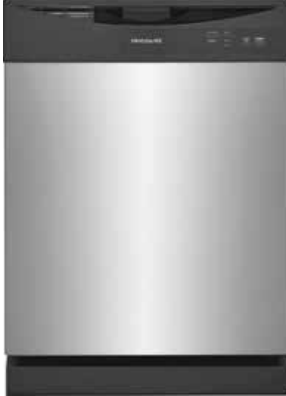


1.7 Cu Ft Capacity.
900 Watts/300 CFM.
Electronic Touch Controls.

W: 29.94" D: 15.56" H: 17.13"

Dishwashers

C21033



62 dBA
Complete Clean with 5 Level Wash System.
Energy Saver Dry Option.
Fits up to 14 place settings.
Hard Food Disposer and Filtration.
Control Lock.
Heat/No Heat Dry Option.

W: 24" D: 25" H: 35"

C21035



50 dBA
Energy Star Certified.
5 Cycles.
Stainless Steel Tub.
Sani Rinse Option.
Sensor Cycle.
Soil Sensor.

W: 24" D: 25" H: 35"

C21034



ENERGY STAR Certified.
Plastic Tub.
5 Options/5 Cycles.
51 dBA.
Soil Sensor.
Cycle Status Indicator and Sensor Cycle.
1-Hour Wash Cycle and heated Dry Option.
High Temperature Wash Option.
Fingerprint Resistant Stainless Model.

W: 23.88" D: 24.5" H: 34.5"

C21040



Washer & Dryers

C21036



Washer: 5.0 Cu.Ft. Capacity.
12 Cycles/ 5 Temps.
660 RPM Max Spin Speed.
Adaptive Wash System.
Deep Water Wash/ Extra Rinse.
Washer Hose Sold Separately.

Dryer: 7.0 cu. ft. Capacity.
12 Cycles/ 4 Temps.
Timed Dry - up to 70 mins.
Wrinkle Shield - up to 90 mins.
AutoMoisture Sensing.

C21037



4.5 Cu. Ft. Capacity (Washer).
5.6 Cu. Ft. Capacity (Dryer).
Excellent Cleaning Performance.
Quick Wash and Dry Cycles.
MaxFill Gives You The Maximum Water.
10 Different Wash Cycles.
6 Different Dry Cycles.
Bleach Dispenser.
Stainless Steel Drum Material.

W: 27" D: 31.5" H: 76"

C26053



Advanced Spin Technology.
Duracore Drive System.
Intelligent Controls with m-series technology.
Energy-efficient cleaning.
CLOTHESPIN™ app by Maytag compatible.

C26054



Microprocessor controls.
TURBOVENT™ dryer technology.
CLOTHESPIN™ app by Maytag compatible.
5-year limited warranty.

C26051 - Coin Operated



Extra-Large Capacity.
Simple, Easy-to-Use Controls, Coin-Ready.
Four-Roller Suspension with Permanently.
Lubricated Bearings.
Premium Porcelain Enamel Top.
Full-Wrap Console.
Easily-Removable Front Access Panel.
Extra-Large Reversible Door.

C26052 - Coin Operated



Deep-Water Wash System.
Heavy-Duty Cabinet.
Service Made Easy.
Powerful Drive System.
Traditional Flex-Vane Agitator.
1/2-HP PSC Motor.
Stainless-Steel Wash Shaft.
Heavy-Duty Removable Front Panel.
Easy-Access Steel Base.
Triple-Lip Seal with Garter Spring.

C26049 - Coinless



Extra-Large Capacity.
Simple, Easy-to-Use Controls.
Four-Roller Suspension with Permanently.
Lubricated Bearings.
Premium Porcelain Enamel Top.
Full-Wrap Console.
Easily-Removable Front Access Panel.
Extra-Large Reversible Door.

C26050 - Coinless



Deep-Water Wash System.
Heavy-Duty Cabinet.
Service Made Easy.
Powerful Drive System.
Traditional Flex-Vane Agitator.
1/2-HP PSC Motor.
Stainless-Steel Wash Shaft.
Heavy-Duty Removable Front Panel.
Easy-Access Steel Base.
Triple-Lip Seal with Garter Spring.



Bathroom & Common Area Accessories

C26019



Dries hands in 12 seconds with a touch-free operation and uses a HEPA filter and has a lifetime antimicrobial coating to protect the product.
 Approved by HACCP International as safe for use in the food and beverage industry.
 Sealed casing infused with antimicrobial additives to protect the product.
 NSF approved

C26023

Semi recessed design provides large capacity receptacle with minimum space.
 Available with extra large waste capacity.
 Waste receptacle is completely removable for maintenance.
 Stainless welded construction with locking removable waste bin.
 Hands free dispenser reduces paper flow and provides maximum hygiene. Designed to dispenser jumbo roll towels, max 8" diameter.

Capacity: 11 gal. (50 litres)

W: 17.25" D:10.13" H: 56.17"



C26021



All standard single fold and roll towels (max. 6" diameter and up to 10" long).
Available with keyed tumbler lock to reduce vandalism.
All welded construction of 20 and 22 gauge steel.
Full length piano hinge on door.

C26022



Designed to dispense Jumbo 8" diameter (4" reserve roll) x 8" wide roll towels.
Push action lever.
Comes with keyed tumbler lock to reduce vandalism.
Front loading for easy service.
Polycarbonate vandal resistant smoked transparent door.

C26016



Touchless dispensing reduces the spread of germs.
High efficiency, reliable motor provides long lasting battery life.
Dual functioning; features a back-up mechanical override lever allowing for access to paper even when batteries run out.
Requires 4 D-cell batteries (included).
Key required to open/close.

C26017



Approximately 20 second drying time.
Sound level: 61-67 db.
Sensitive distance of sensor: 4-12" (10-30 cm).

C26018



Cast steel, 6mm thick, porcelain enameled coating.
Approximately 20-25 second drying time.
Sound level: 70 db.
Sensitive distance of sensor: 4-12" (10-30 cm).

C26020

Constructed of 18-gauge satin-finish stainless steel tubing. Concealed mounting flange 1/8" thick stainless steel plate, 2" W x 3 1/8" H, with screw holes for concealed anchors. Cover is 22-gauge stainless steel with satin finish, 3 1/4" diameter. Cover snaps over mounting flange to conceal screws.

L: 18" DIA: 1-1/4" tubing.



C26069



Ideal for outdoor areas and high traffic locations. The heavy, sturdy design is less likely to be knocked over or blown over by the wind.

Rubber feet to prevent unit from slipping
Easily folds for storage
Caution description in English, French, and Spanish
Stainless steel construction.

W: 13" D: 10.125" H: 24.375"

C26062



Fits under most desk units.
Made with 35% recycled content.

C26063



Small Guest Room Recycling Container.

C26064



Three compartment recycling station.

C26065



Two compartment recycling station.

18 gauge stainless steel

Indoor and outdoor installations. Adjustable feet for easy leveling. Flexible labeling kit accommodates specific separation requirements. Ergonomic front loading door reduces risk of back injury. Inclined top discourages use as a table or chair. All exterior components are fabricated metal for maximum fire protection. Leak proof liners. Magnetic latch on door and keyed tumbler lock.

Each liner has a 67 litre capacity.

C26072



This 22 gauge stainless steel wall mounted waste receptacle is designed to conserve floor space in medium to light duty areas.

The garbage can has all stainless steel construction that offers maximum fire protection with no openings on sides or bottom of the unit. Tight sealing head and spring loaded door promote oxygen starvation. Optional galvanized liner.

Capacity: 50 litres

C26073



This 22 gauge stainless steel garbage can is intended for areas where extra durability is required. The medium unit will fit under most counter tops.

Rounded soft edge design. Recessed feet elevate the unit to provide a neat appearance with minimal maintenance.

Capacity: 80 litres



Accommodation Furniture & Accessories

C26076



Available in 32", 40", 43", 49", 55", 65".

C26077



Hotel Logo/Welcome Message.
Anti-Theft Battery Cover.
Hotel Mode - Plug and Play.
Energy Star.

Available LED Sizes: 32", 40", 46", 55"

C26067



Safe fitted with an external trap deposit cash bags, bulky items securely without opening.
 Anti-fishing plate to prevent removal of deposited items.
 Secured by a high security digital lock (2 user codes).
 External battery power (in event of battery failure)
 Over-ride key supplied in the event of lock failure.
 Constructed with a 10mm solid steel door and 6mm steel body.
 Supplied with 1 shelf.
 Fixing kit supplied allows for self installation to the floor.

External: W: 13.38" D: 14.96" H: 17.91" (D does not include lock, handle, and hinge)
 Internal: W: 12.91" D: 12.13" H: 8.34"
 Volume: 24 litres

C26066



External USB battery pack allows you to open quickly should batteries fail. Its two emergency opening override solutions—access card and a traditional key. Charcoal Black 2" gauge cold steel cabinet, and a blue LED control display panel.

Internal: W: 17 9/16" D: 13 9/16" H: 7 12/16"
 External: W: 17 14/16" D: 16 9/16" H: 7 14/16"

C26068



Class B-Rated insurance rating with 1/2" thick high strength steel doors and high strength steel body.
 Relocking device double locks against burglary attacks
 Large diameter chrome steel bolts and force resistive handle.
 Hinge side inter-locks from inside to resist hinge removal.
 Deposit tray and front compartment support most deposits
 Bolt down holes.

Internal: W: 14" D: 10-1/4" H: 12-1/2"
 External: W: 14" D: 14" H: 20"

C26035



Fire extinguisher available in all sizes.

C26057



Luggage Rack w/Black Straps.

C26025



2" diameter durable stainless steel tubing.
Full wraparound bumper w/ powder coat metal trim.
Black carpet, stain resistant.
4 double garment hooks. 8" full pneumatic wheels
(2 rigid; 2 swivel).

C26024



Double ball top design on a 1" diameter heavy gauge tarnish proof aluminum frame.
Available in lengths of 40" and 35" with 4 x 8" solid rubber wheels.
Available in durable satin aluminum, tarnish proof satin brass, and designer powder coat finishes.
Choice of 6 carpet colors.
Wrap-around, non-marking vinyl bumper system.
Large capacity - 1500 lb. load rating.
Built for indoor/outdoor use.
Custom carpet logos are available.

C26031



Capacity: 500lbs
5 foot base – 14 gauge steel base, powder coated.
5 foot uprights – 1 5/16" inch diameter 16 gauge steel
4" heavy duty casters.
Colors: Black, White, Silver, Yellow, Orange, Red, Blue
W: 23 L: 63" H:67"

C26026



All-steel construction.
Heavy-gauge angle steel frame and legs support with durable, helically suspended polypropylene or link deck sleeping surface.
Auto-leg opening; 5" ball-bearing swivel wheels and 8" "big" wheels polypropylene deck center support.
No-Sag® sinuous wire strands in center.

C26029



Compact AM/FM Alarm Clock Radio.
Dual alarm: radio or buzz and snooze option.
Bright, red easy-to-read LED display.
AM/FM indicators.

C26030



Insta-set feature automatically keeps time for life of the unit, no more resetting after a power failure.
Daily alarm reset – alarm only goes off once, no worry that next guest will wake to previous guests alarm.
USB charging port.
Digital FM Radio with battery back up.

C26048



Commercial grade iron.
Auto shut-off options.
Non-Stick Soleplate.
Self-Cleaning.
12-Foot, 360° Swivel Cord.
Spray mist and steam feature.
Large Easy-View Water Reservoir.
Designed to use tap water.

C25047



Wall-mounted mirror. Please inquire about the different finishes that are available.

W: 32"

C26040



Choose from a variety of Men's hangers, including ones with a standard hook or ball top in a Natural finish, as well as a contoured hanger in a Walnut finish.

C26041



Choose from a variety of Women's hangers, including Women's Suit Hangers in a Natural finish with Locking Clips and a Standard or Ball Top Hook, or Contoured hangers in a Walnut finish, complete with a Locking Trouser Bar.

C26042



Metal Hangers-Nickel Plated Steel-Powder Coat Finish.



C26060



Constructed of soft micro fiber, for a down-like feel.
 Exceptional quality blown polyester pillow.
 Standard (24oz fill), Queen (29oz fill), and King (32oz fill)
 ticking: T230 100% cotton white with piped edges.

C26061



Corded piped edges and micro denier polyester.
 Machine washable.
 Standard (33, 36, or 40oz fill), Queen (56oz fill), King (65oz
 fill) ticking: premium T230.White 100% cotton.

C26059



This pillow meets the 22 oz. fill weight specified by many
 hotel franchise properties.
 Standard (22oz Fill Weight), Queen (27oz Fill), King (32oz
 Fill), ticking: Poly/Cotton edges automatically sewn.

C21041



This super pillow top plush hybrid mattress features five advanced cooling technologies and an extra-thick layer of soft, yet supportive foam close to the sleep surface for the ultimate in cloud-like softness and pressure-relieving comfort.

*Available in Twin/Single, Full/Double, Queen, and King.

C21042

The luxurious quilted euro top hybrid mattress features technologies including latex memory foam which improves support while conducting heat away from the body to create a cooler sleep environment, and cool liquid gel-enhanced memory foam that provides pressure point relief while increasing airflow to move heat away from the body.

*Available in Twin/Single, Full/Double, Queen, and King.



C214004

Twin, Double, Queen, King.
Foam, spring, Pillow Top, waterproof,
bedbug proof, mattress in a box.

Can be made to client specifications.



*** Any custom mattress material and size are available (specific fire rating, bed bug proof, foam, spring, etc.)**

C214002



C214003



Bedding:
Sheets: fitted, flat.
Pillowcases | Duvet and duvet covers | Quilts | Comforters.
*Available in Twin/Single, Full/Double, Queen, and King.

C214000



C214001



Towels:
Bath | Hand | Face | Spa | Pool | Gym.
Bath sheets | Bath mats.
Available in light to heavy weight.
Available in different materials.

C214005



C214006



Window Treatments:
Roller shades, vertical blinds, solar shades, blackout blinds, vinyl blinds, window tint film, window coverings, and drapery.
Can be custom made to client specs.

Dressers

C25041



W: 32"
3 drawer

C25042



W: 34"
4 drawer

C25051



W: 32"

C25052



W: 32"

C25058



W: 32"

C25059



W: 32"

Please inquire about the different finishes that are available.

Wardrobes

C25043



Left-hinged W: 24"
Right-hinged W: 24"

C25044



Left-hinged W: 24"
Right-hinged W: 24"

C25060



Left-hinged W: 24"
Right-hinged W: 24"

C25061



Left-hinged W: 24"
Right-hinged W: 24"

C25045



W: 36"

C25046



W: 36"
1 drawer

C25062



W: 36"

C25063



W: 36"
1 drawer

C25053



W: 36"

C25054



W: 36"

Please inquire about the different finishes that are available.

Bedside Table

C25038



W: 20" H: 24" OR
W: 20" H: 30"

C25039



W: 20" left-hinged
W: 20" right-hinged

C25040



W: 20"
3 drawer

C25049



W: 20" left-hinged
W: 20" right-hinged

C25050



W: 20"
3 drawer

C25055



W: 20" left-hinged
W: 20" right-hinged

C25056



W: 20"
3 drawer

C25057



W: 20" left-hinged
W: 20" right-hinged

Please inquire about the different finishes that are available.



The GoodKnight Bed is a bed frame that traps and kills bed bugs. C2 provides the GoodKnight Bed as a chemical-free solution to bed bug problems. The self-sanitizing bed frame was researched and tested by engineers and scientists and designed to prevent and treat bed bugs in a non-disruptive manner.

The GoodKnight Bed is different because it is a safe, long-term solution. It can treat your mattress, bedding, furniture and clothing so that a safe and bite-free sleep can be enjoyed. Available in all standard and custom sizes.



How the GoodKnight Bed Works

1. Unlock and open foot panel.



2. Carefully pull out Heat Shield.



3. Unfold Heat Shield over bed.



4. Zip Heat Shield closed.



5. Plug heater into wall and turn dial to 3 hours.





C2 can fulfill all products to complete any accommodation space.

- Nightstands, desks, dressers, TV units
- Bed Frames & mattresses
- Seating
- Signage
- Fitness equipment & machines
- Spa equipment & accessories
- Pet spas
- Artwork & accessories

*Please inquire about any other items not listed above.





Janitorial

C26055



C26056



These lockers can be used for virtually every application: in schools, colleges, change rooms, offices, homes and multi-use facilities.

C26043



Full-Size Cabinet offers exceptional storage space and adjustable middle shelf.
 Extra shelves available for additional customization.
 Locking Cabinet Doors can be added to secure supplies.
 Vacuum holder.
 Durable 8" ball bearing wheels and locking casters.
 Durable commercial-grade construction.
 Accessories are available to help customize your carts to your needs.

W: 22" L: 49" H: 50"

C26047



4 bumpers.
 Undercarriage.
 Lockable doors.
 2x vinyl bags.

W: 59" L: 21" H: 50"

C26044



Full 6 bushell capacity.
 1" Tubular Steel, powder coated finish.
 Folding bottom shelf.
 4 non-marking 3" casters.
 Riveted bag hooks.
 Folds easily for storage.

W: 28 1/4" D: 23 1/4" L: 36"

C26045



Spring platform brings contents to a convenient level.
 Metal frame provides durable support.
 Conceals loads without reducing capacity.
 Diamond wheel placement for maneuverability.

2 options available:

Spring Platform Cube Truck - 500lb/14 ft3 Capacity
 Spring Platform Cube Truck - 600lb/20 ft3 Capacity

C26046



Metal frame provides durable support.
 Conceals loads without reducing capacity.
 Diamond wheel placement for maneuverability.

Cube Truck - 300lb/8 ft3 Capacity
 4 truck options available

Lid for Cube Truck
 3 lid options available

C26079



Commercial vacuum with a 2.5 gallon tank.

C26078



Commercial vacuum with a 4.5 gallon tank.

Key Features:

Built to withstand commercial use and equipped with a thermal overload for long-term motor protection and operator safety.

The rewind head conveniently stores the power cord internally to prevent power cord damage.

The switch is now conveniently on the front of the vacuum for easier operation.

When equipped with a HEPA-FLO bag, the standard filtration is 0.3 micron at 99.97% efficiency.

Various sizes available.

C26081



The most powerful suction of any cordless vacuum that even collects pollen and bacteria particles. The fully-sealed filtration system traps 99.97% of particles as small as 0.3 microns – expelling cleaner air. Changes to a handheld vacuum cleaner and has a wall-mounted dock, to recharge and tidily store tools. Meets and exceeds standards for effectively removing allergen-containing dust from carpets and hard floors. Certified by the Asthma Society of Canada. Available in 3 models.

C26070



Ideal for pedestrian common areas.
Features: Ashtray secured with tumbler keyed lock.
Corrosion resistant galvanized steel.
Capacity: 2.3 litres (0.5 gal.).

W: 9" D: 5" H: 13.5"

C26071



Slim metal receptacles.
Weather resistant powder coating finish.
Stable, weighted, locking units with bolt down option prevent theft, and tip-overs.

Personal Protective Equipment

C24034



4 - Ply Disposable Mask.
CE Certifies.

C24035



N95 Medical Masks.
FDA Certified.
CE Certified.

C24036



KN95 Civil Masks.
EN149 Test.

C24037



Face Shield.
Foam forehead band,
1/2" wide woven
plastic, 250 micron PVC
material.

C24038



Virta LITE PF Gloves:
Small, medium, large.

C24039



Yellow Double-Dipped
PVC Gloves.

C24040



Infrared Hand Held
Thermometers.
FDA Certified.
CE Certified.

C24041



Variety of hand sanitizers available
including alcohol-free options.

C26058



Isolation Gown SMS.
Fluid Resistant
Regular Size.
Latex-Free - Blue.

C24043



Reusable Isolation Gown
- Tyvek Material for liquid
resistance. One size fits
all, elastic wrist bands,
adjustable body size.

C24042



Disposable Isolation Gown
- Meets FDA level 1, 2, and
3 protective gown guidance.
ASTM F2407-06 Liquid
Penetration Test ATCC 42.



C24046



Can be used with soap or hand sanitizer.
Touchless.

C24045



No contact with hands.
100% mechanical - no batteries.
Rust proof powder coated aluminum with steel base.
Simple press down on the foot pedal will dispense the sanitizer directly onto your hand.
Comes with felt pads on the underside of the base to protect floors and reduce noise.

H: 39"

C24044



Rust proof, durable, powder coated steel construction.
Holds 1 gallon of sanitizer.
H: 40.5"

C26034

Pressure PSI 100
Solution spray rate gpm .05
Continuous spray time (one battery w/ charge): 8 hours
Voltage: 12 volts
Wheels: 3"
Compact height for storage/transport: 22.5"
Sound level dBA: 30
Weight (including battery): 32 lbs



Prevention is the best medicine. This hospital-grade misting system is specifically designed for use with disinfectants that are EPA approved. Reduce the risks of Health Care Acquired Infections by killing virus, bacteria and mold faster, safer and quieter. Misting provides higher efficacy by improving coverage more efficiently than spray wipe methods and wipes. It delivers disinfectant into hard to reach corners and crevices found in many healthcare facilities.

W: 13.5" L: 19" H: 39.5"



Fitness & Activity Rooms

Contents

Fitness Centres	142
Pool Tables	143
Air Hockey Tables	145
Sports Tables	146
Shuffleboards	147
Pianos	148
Poker Tables	149

Displayed are some examples of products that C2 can provide. More products and variations are available, please inquire.

Fitness Centres

C26037



Heavy-duty, two-tier rack holds iron or rubber coated hex dumbbells.
Holds 10 pairs of dumbbells.
Dumbbells sold separately.

W: 23" L: 56" H: 29"

C26036



Available in 3 lb, 5 lb, 8 lb, 10 lb, 12 lb, 15-100 lbs increasing in 5 lb increments.
Steel weight with a rubber coating on the ends.
Rubber coating protects floor and racks when dumbbells are set down.

C26038



Flywheel - 18 lbs.
Seat: Molded, Contoured Seat.
Seat adjustment: Height - 19 Positions.
Resistance system: Magnetic - Eddy Current.
Resistance level: 16.
Pedals: Self Balancing, Adjustable Straps.
Transport - Rear Mounted.
Max. user weight - 400 lbs.

W: 28" L: 43" H: 56"

C26039



Wireless Chest Pulse Strap and Dual-Grip Heart Rate Monitor.
10" High-Definition Full-Color Cap Touch Screen
Workout Fan.
Set-a-Goal Workout Center.
9 Built-In Workouts.
Compatible Music Port for iPod®.



Pool Tables

C23004



Sizes: 7ft, 8ft, 81/2ft, & 9ft

Wood Material: Solid Oak, Maple, Hard Maple, Cherry or Walnut.

Finishes Available: All Olhausen® Finishes.

Rail Sights: Diamond - Pearlized.

Slate: Framed, Diamond-Honed.

Pockets: Leather.

C23000



Sizes: 6ft, 7ft, 8ft, 8 1/2ft, 9ft, 10ft & 12ft

Material: Laminate.
Rail Material: Solid Oak or Maple.
Laminates Available: Garden Oak, Classic Cherry and Black.
Rail Sights: Round - Pearlized.
Slate: Framed, Diamond-Honed.
Pockets: Leather.

C23001



Table size: 8 ft
Finishes Available: Chestnut
Leg Options: Standard (as shown)
Rail Sights: Diamond-Shaped White Pearlized
Pocket: Fringe
Shield

C23002



Durable plastic pocket corners, round rail sights, and jet-black laminate provide the perfect detail.

Table size: 8 ft.
Finish Available: Black.
Leg Options: Standard (as shown).
Rail Sights: Round.
Pocket: Gully Return or Drop Pockets available.

C23003



Sizes: 7ft, 8ft, 8 1/2ft & 9ft

Wood: Solid Oak, Maple, Hard Maple, Cherry or Walnut.
Finishes Available: All Olhausen® Finishes.
Rail Sights: Diamond - Pearlized.
Slate: Framed, Diamond-Honed.
Pockets: Leather.

Air Hockey Tables

C23005



The 6" deep cabinetry is very sturdy and stands up to vigorous one on one play. The electronic scoreboard folds down allowing you to add the optional 2 in 1 - 7ft table tennis conversion top right on the air hockey table. *Conversion Top Sold Separately*

W: 34" L" 76"

C23008



State-of-the-art electronic scoring and exceptional speed of play. Aluminum rails with powder-coated metal corners. Super slick, scuff-proof "ice" helps keep the table looking sharp even after hours of intense competition.

C23006



Air hockey table with solid extruded aluminum rink walls. It has a side mounted electronic scoring with fun sound effects, game timer and lights. Goals are registered by infrared sensors in the nets for best accuracy. Table comes complete with four 3" 21gram pucks and 4 pushers. Solid four post leg system with 6" metal leg levelers with rubber floor guards.

Sports Tables

C23009



This foosball table has a tempered glass playing surface, balanced tournament players, ball bearing bushings and drink holders. Heavy duty top rail at a full 1 1/2" thickness. The cabinet is finished in a durable Laminate so that it is stain, scratch and burn resistant. Commercial style leg levelers with rubber base for floor protection that provide for easy adjustment. Heavy duty metal rods with sure-grip octagonal rubber handles. The table has side ball returns for convenience.

C23010

This commercial style dome hockey features steel rods and an electronic scoring unit. This table also features a clutch system that prevents damage to hockey players or gearboxes. The 5mm thick acrylic dome is hinged with a handle for easy access to the playing surface. Features leg levelers for easy set up on any floor surface. Side mounted electronic scoring that tracks goals with infrared sensors in the nets for accuracy. The scoring unit times games, tracks your score and has great sound effects.

W: 36" L:41" H: 51 1/2"



C23013



This indoor Ping Pong Table is built to last. Thick metal tubing supports the 3/4" multi-coated top for extra strength. Plastic-coated metal featured on the frame offers protection against wear and tear. It is easy for one person to fold up this table and roll it into storage or another space due to the convenient locking handle system.

C28111



C28112



These tables feature a checker / chess board plastic laminate centre. The table can be made in any size up to a maximum of 36" x 36".



Shuffleboards

C23011

C23012



W: 30" L: 138" H: 33"
Playing Surface Height: 30"

Pianos

C214007



C214009



Upright, baby grand, grand, or electric.

* All other statement pieces available upon request.



Poker Tables

C23014



84" X 42" X 30"

C23015



96" X 42" X 30"

This custom made durable poker table has the following features:

Durable, reinforced steel folding legs.

Highest quality E1 MDF board.

Thick and high density foam arm rest covered with high quality black PU leather.

10 piece jumbo sized stainless steel cup holders built into the playing surface.

Professional suited speed felt, waterproof white betting line.

C23016



Convenient size makes it easier for storage and transferring.

Durable, reinforced steel folding legs.

Highest quality E1 MDF board table top.

Thick and high density foam arm rest covered with high quality black PU leather.

8 piece regular sized DEEP stainless steel cup holders are built into the playing surface (removable for easy cleaning).

Professional Black suited speed felt, waterproof.

W: 36" L: 72" H: 30"

C23017

Made with a solid oak pedestal, lion claw base and leg - stained ebony black.

The playing surface is padded with water proof diamond suited speed cloth.

The arm rest cushion is made of high density 1" foam and covered with high quality black leather.

There are 8 jumbo stainless steel cup holders (removable for easy cleaning).





Decor

Contents

Decor	151
Clocks	154
Lamps	155
Live Plants	156
Permanent Flowers	158
Permanent Plants	160

Displayed are some examples of products that C2 can provide. More products and variations are available, please inquire.

C22000

C22003

C22001

C22004

C22002

C22005



W: 6" D: 3.25" H: 7"

C22007

C22008

C22009

C22010



W: 3" D: 5" H: 4"

W: 6" D: 2.75" H: 3.5"

C22006

C22011

C22012



W: 9" D: 4.75" H: 3.25"

W: 22" D: 8" H: 23.5"

W: 13" D: 5" H: 15.25"

C22023

C21044

C22024

C21045



D: 18.5" H: 50.5"

Made of natural finished wood and black metal. White enamel base.

Approximately 30 seconds.

Pair of wooden gear sculptures in an antique black finish.

W: 13" D: 11" H: 17"
Weight: 10 lbs

W: 3" D: 3" H: 8"

Weight: 5 lbs

C22073



This canister is ideal for storing small objects.

2 sizes available:
D: 5" H: 7"
D: 5" H: 5"

C22074



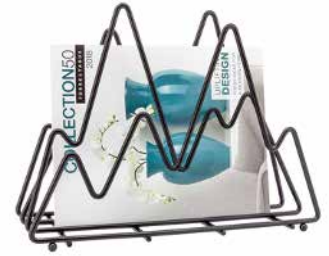
C22104



Store magazines in style with this clean modern acrylic magazine basket.

W: 13" D: 6" H: 12.75"

C22106



Showcase your magazines or organize mail, files or other papers.

W: 14" D: 6" H: 10.5"

C22102



Black and Oak Veneer Coat Rack.

W: 19.5" D: 18" H: 68.5"

C22103



Satin-nickel finish coat rack.
Weight restriction per hook approx
11 lbs (Total 33 lbs)

D: 12.75" H: 68"

C22025



Brown

C22027



White

C22028



Seaside Grey

C22026



Black

This freestanding panel can be used to create a natural room divider or backdrop in any space.

W: 21" D: 8" H: 74"

C22013



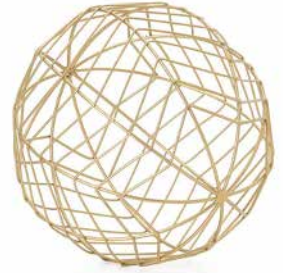
D: 6"

C22014



D: 8"

C22015



D: 10"

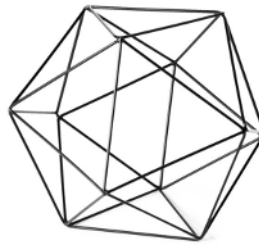
A standout metal piece that gives a modern accent to any room.

C22016



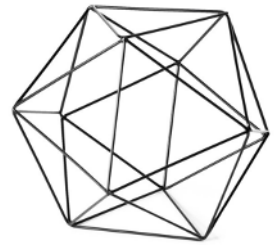
D: 7.5"

C22017



D: 9.5"

C22018



D: 11.5"

Modern geometric sculptures to highlight a shelf or table.

C22019



Silver

C22020



Teal

C22021



Black

C22022



Gold

D: 9.5" H: 12"



Clocks

C22075



Diameter: 15.5"

C22076



C22077



Diameter: 15"

C22078



W: 8" D: 2" H: 15.75

C22079



C22080



Diameter: 12"

Lamps

C22081



C22082



C22083



A modern mix of brass and cement make this the ideal lamp for any space. Fabric shade. (CUL approved) 60 watt max.

Base: DIA: 5"
Shade: D: 14" H: 9"
Total height: 21.5"

Base: DIA: 5"
Shade: D: 14" H: 9"
Total height: 22.25"

Base: DIA: 6"
Shade: D: 14" H: 9"
Total height: 21.25"

C22084



World art resin.
(CUL Approved) 60 watt max.

D: 15" H: 27.5"

C22085



Hand rubbed distressed finish
(CUL Approved) 60 watt max.

D: 13.75" H: 24"

C22087



Ceramic lamp is designed to look like
a stack of stones.
(CUL Approved) 60 watt max.

D: 13" H: 27"



C22086

The carved resin details of this lodge-inspired log design are highlighted by a whitewash or dark patina finish with a neutral linen rectangular shade.
(CUL Approved) 60 watt max.

D: 16.5" W: 4.75" H: 17.5"

Live Plants

C211000



Fiddle Leaf Fig
Ficus Lyrata

C211001



Song of India's
Dracaena Reflex

C211002



Dracaena Marginata

C211003



Auntie Lou Cordy Line

C211004



Monstera Deliciosa

C211005



Peace Lily Houseplant

C211006



Sansevieria Cylindrica

C211007



Sansevieria Laentii
Snake Plant

C214010



Spring Wreath

C214011



Fall Wreath

C211008



Glazed Cranberry Wreath

C211009



Winter Dusting Wreath 2

Above are examples of the wide variety of seasonal decor available.



C211010

C211015



C211016



C211020



C211017



C211021

C211011



C211012



C211018

C211019



Many plant varieties available to complete any design.

Permanent Flowers

C22029



White

C22030



Pink

C22031



Yellow

This product includes bendable wire stems and features real-touch pedals.

Height: 18"

C22035



Creme

C22036



Pink

C22037



Orange

Gorgeous life-like peony bouquets.

Height: 11"

C22056



H: 15"

C22057



H: 30"

C22058



White
H: 30"

C22059



White
H: 17"

Elegant life-like faux calla lilies with bendable wire stems.

Life-like orchids with bendable wire stems and leaves.

Beautiful blooms with bendable wire stems.



C2 can create any custom, permanent arrangement like the one pictured above.

C22065



White

C22066



Yellow

C22067



Light Pink

C22068



Fuchsia

Faux peony plant.
Pot - W: 4" D: 4" H: 4"
Total height: 7.5"

Permanent Plants

C22038



White
H: 50"

C22039



Fuchsia
H: 50"

C22040



Green
H: 50"

C22047



H: 24"

C22042



H: 46.5"

C22046



H: 40"

C22043



Green
H: 45"

C22044



Green
H: 43"

C22045



Dark Green
H: 32"

C22041



H: 32"

C22033



H: 39"

C22034



H: 48"

All above products includes bendable wire stems.

C22032



Green
H: 26"

C22048



H: 40"

C22053



H: 26"

C22049



H: 24"

Lifelike faux ferns includes a short pick so it can easily be incorporated into bouquets and planters.

C22052



H: 25"

C22051



H: 36"

C22054



H: 23"

C22050



H: 45"

Faux bamboo stem.

All items on this page include bendable wire stems.



C22062



Faux fig leaf plant in a matte white ceramic pot and covered in white pebbles.

D: 10.5" H: 14"
Pot - D: 5" H: 4.25"

C22063



Faux cymbidium leaf plant in a matte white ceramic pot and covered in pebbles.

D: 14" H: 17"
Pot - D: 5" H: 4.25"

C22071



Unique mix of succulents planted in a rustic painted wood planter box and complete with natural-looking moss filler.

C22070



Pot - 5.5" DIA
Total height: 13"

C22060



5"

C22061



7"

Life-like faux grass balls.

C22055



H: 44"

This product includes bendable wire stems.

C22064



Faux herb potted plant.

Total height: 17"
Pot - D: 4" H: 4.5"

C22069



3 sizes available.



Art

The following are examples. Please inquire for more art styles and pieces.

C21039



Hand Painted Canvas.

W: 57" D: 2.5" H: 29"

C21038



Hand painted canvas.

W: 60" D: 2" H: 36"

C210001



Oil painting on gallery wrapped canvas with metallic foiled accents in a light gold floating frame.

36" x 48"

C210002



Hand embellished canvas art in floating frame.

36" x 48"

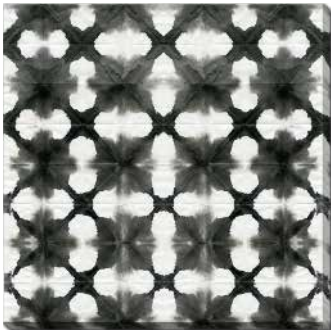
C210003



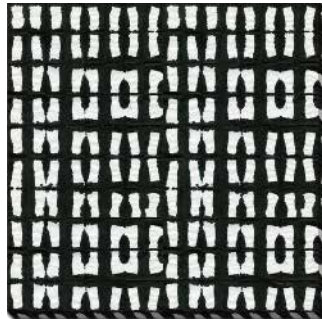
Oil painting with high gloss lacquered finish in a floating frame.

40" x 40"

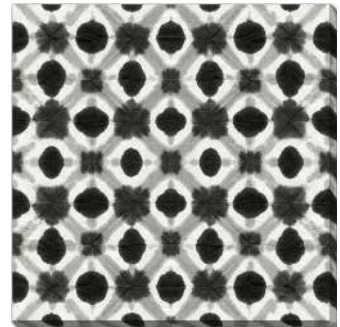
C210004



C210005



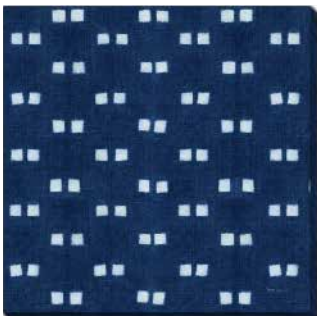
C210006



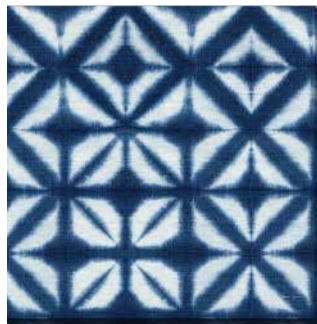
Printed on canvas.

3 sizes available: 38" x 38" | 30" x 30" | 24" x 24"

C210009



C210007



C210008



C210010



Printed on canvas.

3 sizes available: 38" x 38" | 30" x 30" | 24" x 24"

C210011



C210012



C210013



C210014



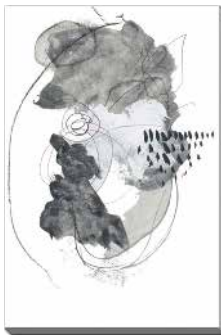
Printed on canvas.

3 sizes available:

C210011 & C210012 - 38" x 38" | 30" x 30" | 24" x 24"

C210013 & C210014 - 38" x 60" | 30" x 45" | 22" x 28"

C210015



C210016



C210017



Printed on canvas.

3 sizes available: 38" x 60" | 30" x 45" | 22" x 28"

C210018



C210019



C210020



C210021



Printed on canvas.

3 sizes available: 38" x 60" | 30" x 45" | 22" x 28"

C29016



This image is printed on paper and then set behind a frame with a subtle mosaic pattern.

3 sizes available

C29019



Patented warp-resistant construction with a solid matboard backing. UV and fade-resistant.

4 sizes available

C29021



Graphic art print. Made with 100% cotton canvas. 100% Anti-shrink pine wood bars and anti-fade ultra chrome inks. 100% Hand-made and inspected.

9 sizes available

C29009



Print on Canvas. A premium hand-stretched gallery print created to last. Featuring a beveled solid wood stretcher bar.

10 sizes available
3 frame colours or canvas options

C29003



Contemporary abstract painting using vibrant bold colours.

11 sizes available.

C210022



High gloss canvas art.

28" x 56"

C210023



Hand embellished canvas art.

24" x 32"

C210024



Fine art, framed and matted under glass.

15" x 15"

C210025



C210033



High gloss canvas art with a lacquered finish.

40" x 60"

C210034



Printed on canvas.

3 sizes available: 38" x 60" | 30" x 45" | 22" x 28"

C210035



C210036



Printed on canvas.

2 sizes available: 30" x 60" | 20" x 40"

C210037



Printed on canvas.

3 sizes available: 38" x 60" | 30" x 45" | 22" x 28"

C210038



C29008



A hand-wrapped custom printed premium giclee canvas.

4 sizes available

C29012



Fade-resistant ink on cotton canvas. This gallery-wrapped canvas is stretched tightly over a 1" wood sub frame.

8 sizes available

C29004



Fade-resistant ink on cotton canvas. This print is stretched tightly over a wood sub frame.

5 sizes available

C29013



Fade-resistant ink on cotton canvas. Each giclee print is stretched tightly over a 1 inch wood sub frame.

5 sizes available

C29000



Fade-resistant ink on cotton canvas. Each gallery-wrapped giclee print is stretched tightly over a 1" wood sub frame.

7 sizes available

C29015



Gallery-wrapped canvas.

5 sizes available

C29014



Fade-resistant ink on gallery-wrapped cotton canvas. It has a white gloss coating ensuring colours are extra vibrant with light reflection.

13 sizes available

C29022



Fade-resistant ink on gallery-wrapped cotton canvas. Each giclee print is stretched tightly over a wood sub frame.
4 sizes available

C210000



Framed print on canvas.

24" x 36"

C210078



Printed on canvas.

3 sizes available: 38" x 60" | 30" x 45" | 22" x 28"

C210075



Printed on canvas and gallery-wrapped.

2 sizes available: 20" x 60" | 12" x 36"

C210076



Printed on canvas.

3 sizes available: 38" x 60" | 30" x 45" | 22" x 28"

C210077



Printed on canvas.

3 sizes available: 38" x 60" | 30" x 45" | 22" x 28"

C210072



Printed on canvas.

38" x 60"

C210073



Printed on canvas.

2 sizes available: 30" x 60" | 20" x 40"

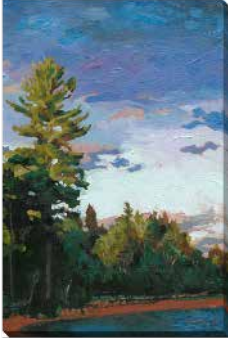
C210074



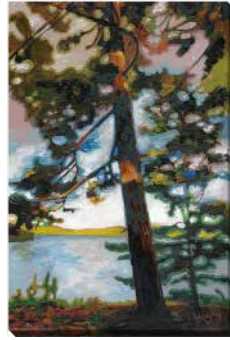
Printed on canvas and gallery-wrapped.

2 sizes available: 30" x 60" | 20" x 40"

C210053



C210054



Hand embellished gallery-wrapped canvas with texture.

30" x 45"

C210055

Hand embellished gallery-wrapped canvas with texture.

3 sizes available: 38" x 60"
30" x 45" | 22" x 28"



C210056



C29001



Fade-resistant 100-percent cotton artist-grade canvas, hand-stretched and stapled over shrink-resistant pine-wood bars in gallery-wrapped style.

8 sizes available

C29005



Giclee print.
Printed atop a 0.12" thick brushed aluminum composite panel for added texture and luminosity.

5 sizes available

C29011



Fade-resistant 100% cotton artist-grade canvas, hand-stretched and stapled over shrink-resistant pine wood bars in a gallery-wrapped style.

9 sizes available

C29020



Fade-resistant gallery-wrapped giclée print is stretched tightly over a 1" wood sub frame.

7 sizes available

C29006



Gallery-wrapped.
Solid wood frame for durability and stability.

4 sizes available

C29007



Fade- and warp-resistant construction with solid matboard backing. With or without a floating frame.

10 sizes available

C29002



Individually printed gallery-wrapped canvas that is stretched by hand. Poly frame for framed prints, cut and assembled by hand.

11 sizes available.

C210039



Hand-Embellished Canvas Art.

24" x 24"

C210041



Hand-Embellished Canvas Art.

24" x 24"

C210040



Hand-Embellished Canvas Art.

24" x 24"

C210046



Printed on canvas.

2 sizes available: 30" x 60" | 20" x 40"

C210061



Oil painting with texture and embellishments.

40" x 40"

C210062



Hand embellished canvas art with metallic foiled accents.

36" x 48"

C210059



Hand embellished canvas art in a floater frame.

30" X 45"

C210058



Hand embellished canvas art in a floater frame.

30" X 45"

C210057



Hand embellished canvas art in a floater frame.

30" X 60"

C210067



C210068



C210064



C210063



Hand-Embellished Canvas Art.

24" x 24"

Hand embellished canvas art in a Champagne floating frame.

28" x 28"

C210065



C210066



C210047



Metallic foiled art on canvas in a floating frame.

Size available: 30" x 45"

Printed on canvas.

3 sizes available: 30" x 45"
38" x 60" | 22" x 28"

Printed on canvas.

2 sizes available: 30" x 60" | 20" x 40"

C29018



C210060



Fade-resistant gallery-wrapped artwork is crafted with 100-percent cotton artist-grade canvas, hand-stretched and stapled over shrink-resistant pine-wood bars.

*Also available framed and matted under glass.

8 sizes available

C210069



Printed on canvas.

3 sizes available:
38" x 38" | 30" x 30" | 24" x 24"

C210070



Printed on canvas.

3 sizes available: 30" x 45" | 38" x 60" | 22" x 28"

C210071



C29010



Scratch- and fade-resistant. Mounted on a sturdy yet lightweight board to protect against warping, overstretching, or loose, sagging prints. Finished with a closed mat board backing.

4 sizes available

C210042



Embellished canvas art in a floater frame.

30" x 30"

C210043



C210052



Printed on canvas.

3 sizes available: 38" x 38" | 30" x 30" | 24" x 24"

C210051



C210044



C210045



Hand embellished canvas art.

28" X 40"

C210050



C210049



C210048



Fine art printed on canvas in a floating frame.

24" X 30"

C210079



C210080



Printed on canvas and gallery-wrapped.

3 sizes available: 24" x 24" | 30" x 30" | 38" x 38"

C210026



36" x 36"

C210027



30" x 45"

Oil paintings.

C29017



Available with grey or black frame, wood plaque or wrapped canvas.

3 sizes available

C210028



24" x 36"

C210029



24" x 36"

C210031



30" x 30"

C210030



24" x 36"

C210032




24" x 36"

Framed Canvas Mount.



Carla Coyle

 204-797-3201

 info@c2customfurnishings.com

